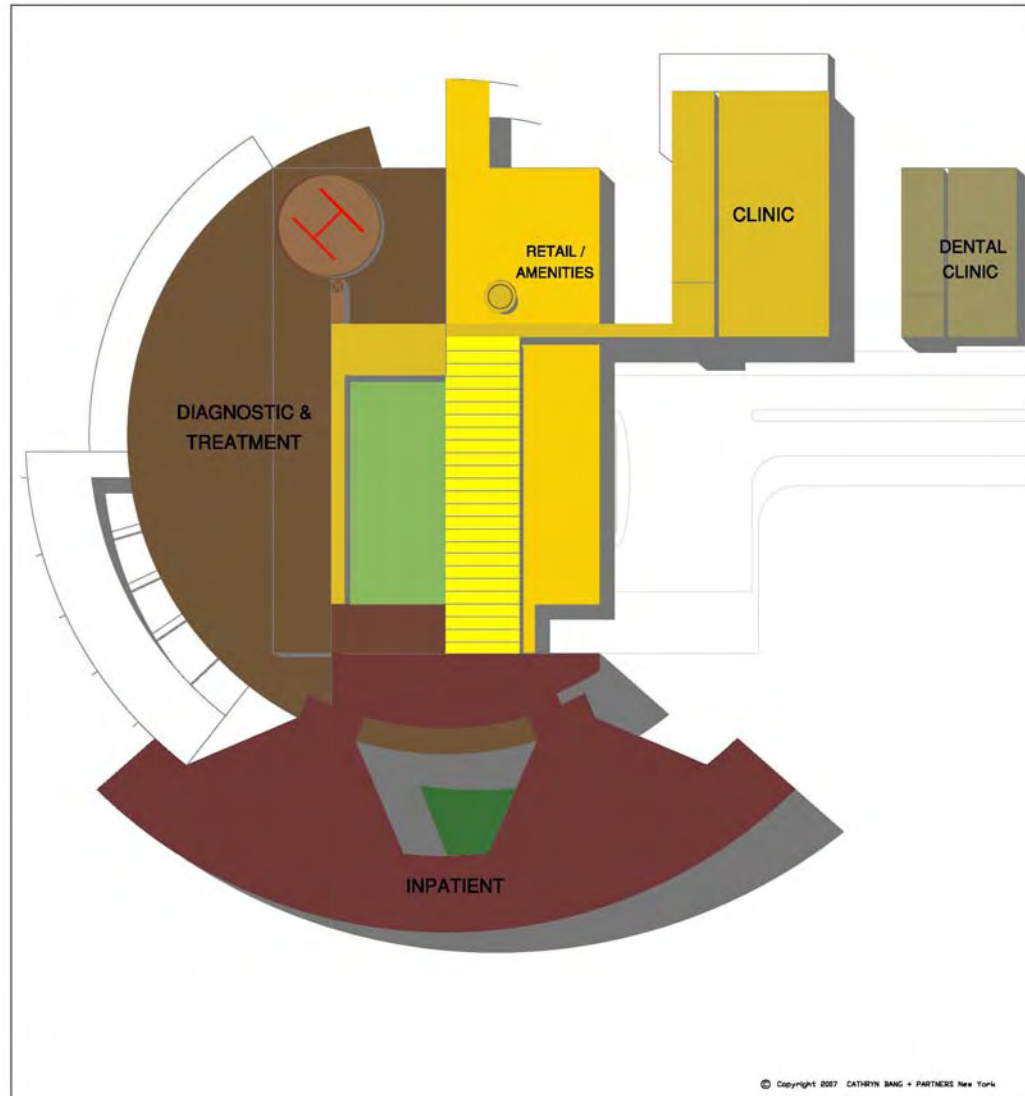
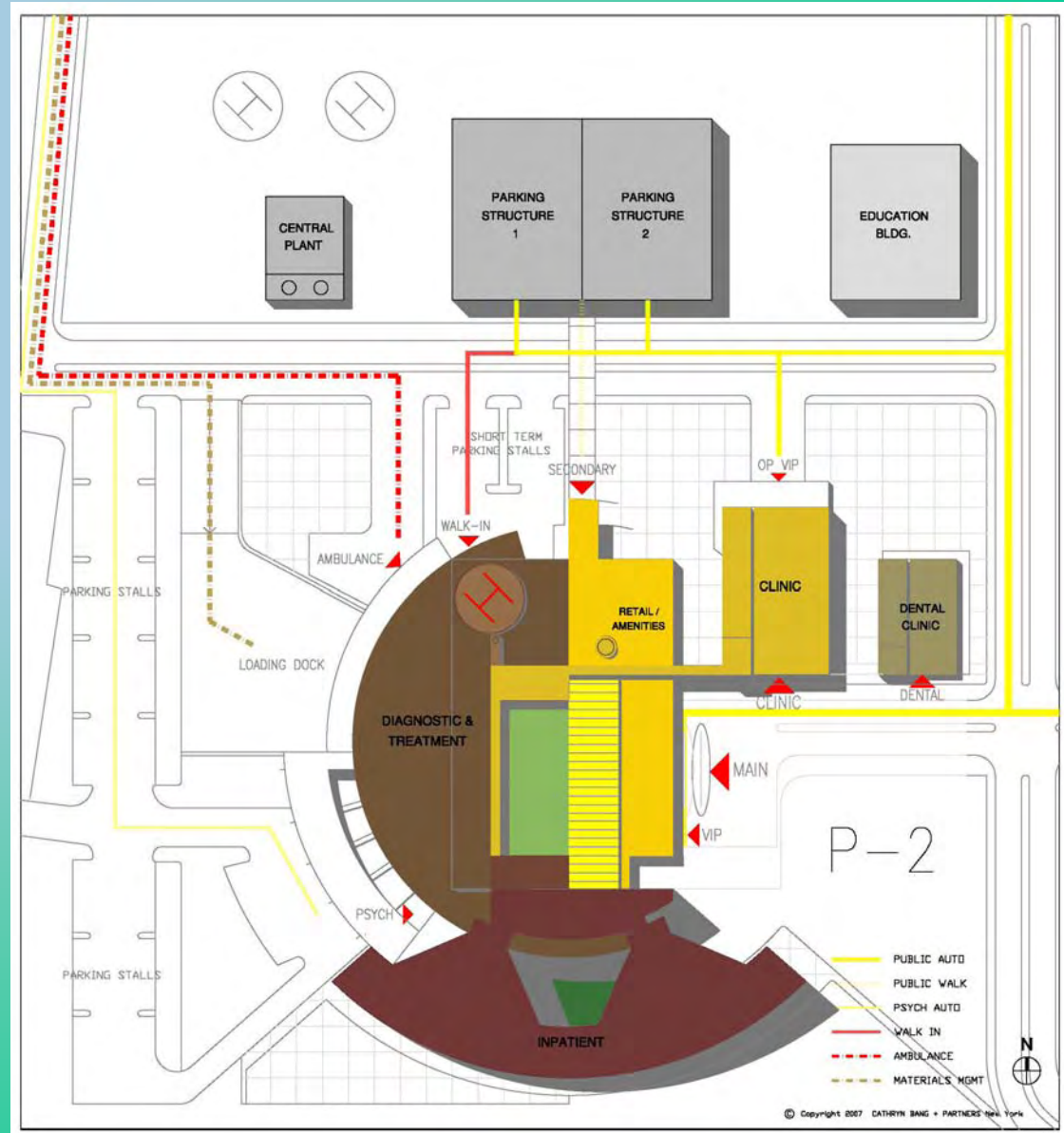


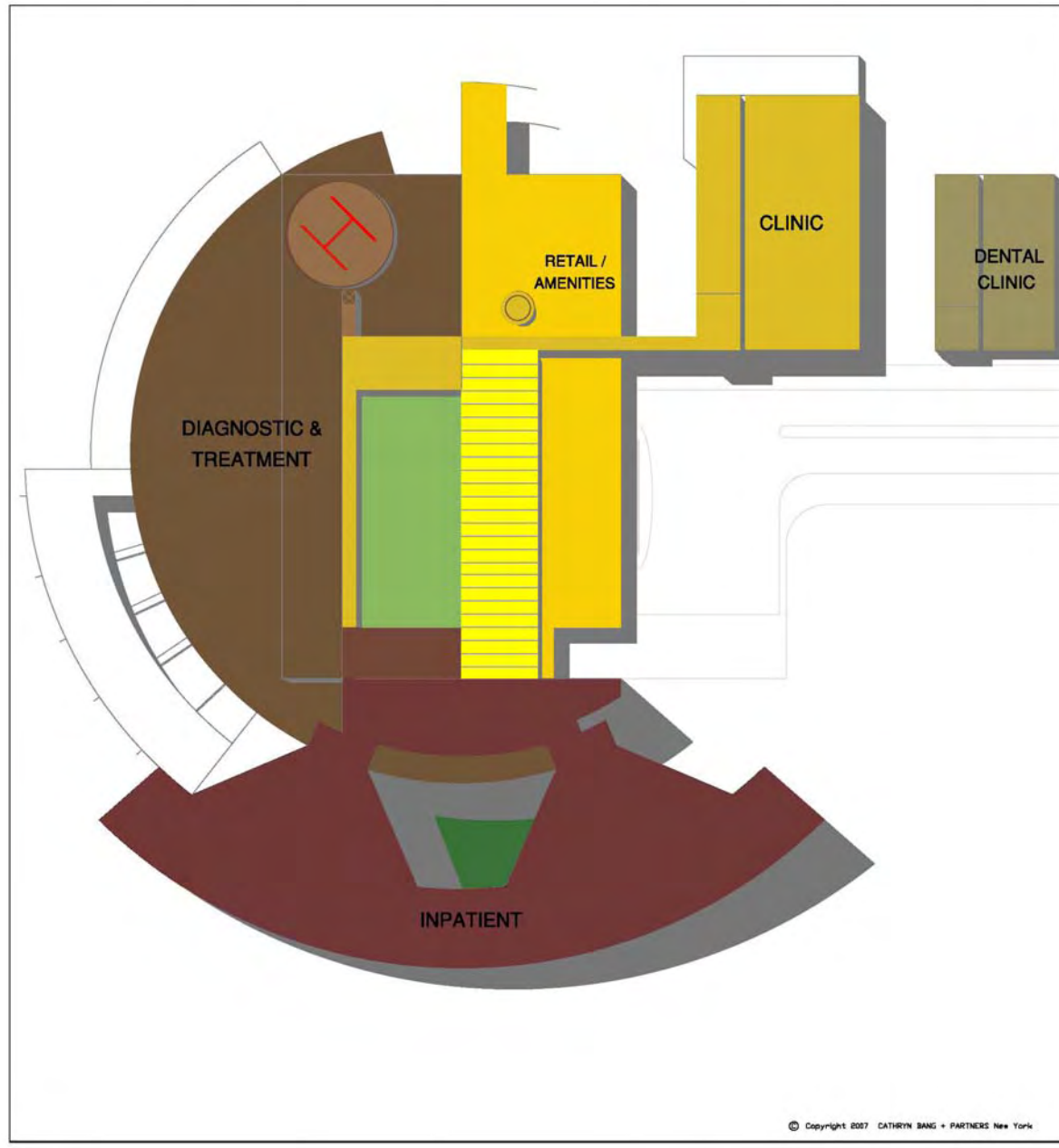
Recent UAE
600 bed Hospital
Project
CASE STUDY
Abu Dhabi, UAE



SITE MASTER PLANNING

- Clear Site Entry
- Clear Circulation Routes
- Site Security
- Zoned Bldg Development
- Linkage of IP, D&T, Support and OP Services
- Open Park-like Setting
- Concerns for Residential Neighborhoods





Recent U.A.E. Healthcare Project Case Study
PROJECT: New 600 bed NZMH UAE Military Hospital

CATHRYN BANG + PARTNERS New York
Healthcare Architecture, Planning, Interiors

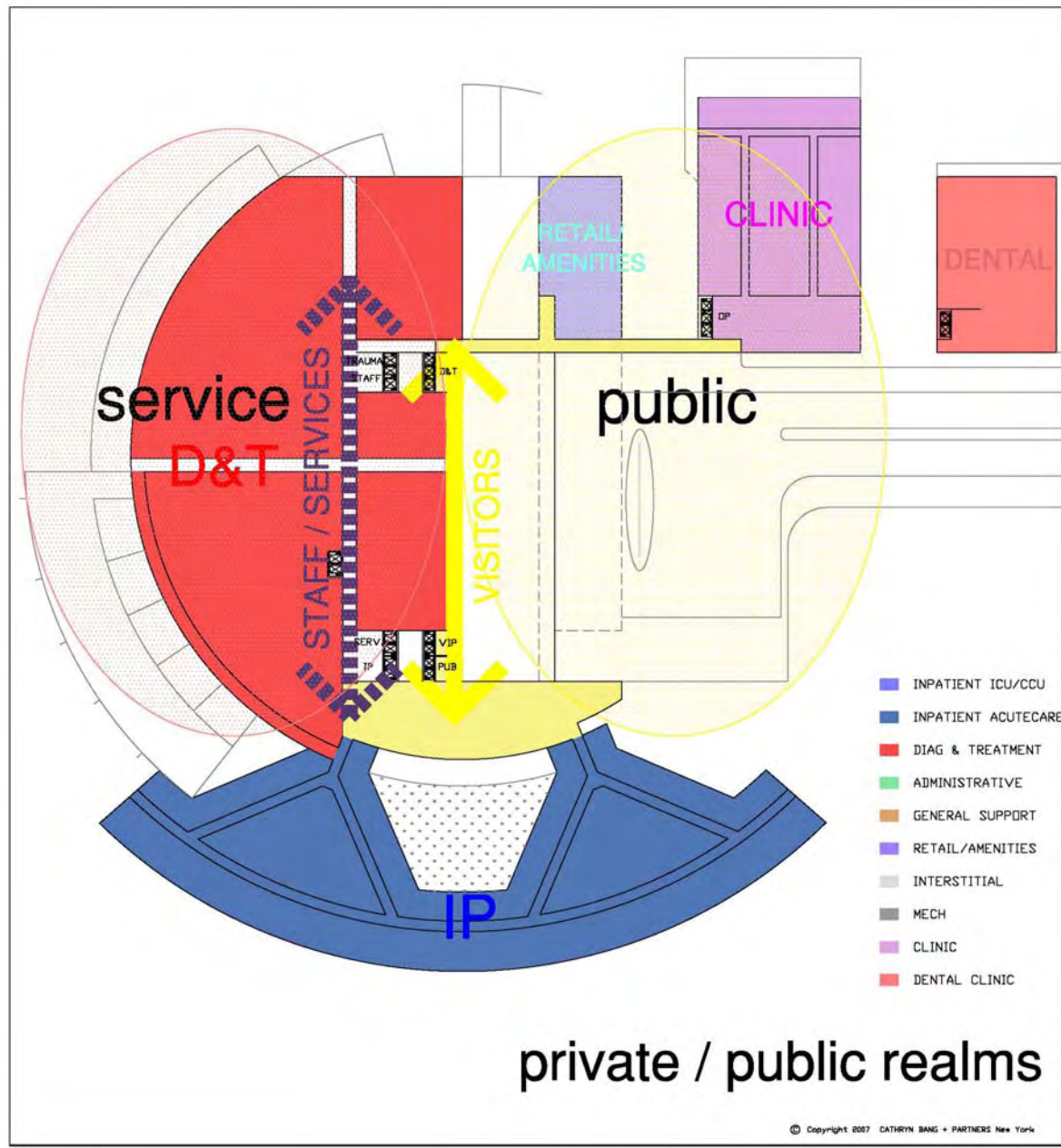
The Strategic Planning Initiatives for Quality Healthcare

Managing the Flow of Technology Adoption and Service Re-Engineering

- i. Planning Initiatives to (1) Minimize Patient Movement; (2) Optimize Operational Efficiency; (3) Decrease Space by eliminating unnecessary redundancy; and (4) Reduce Project Cost by maximizing Standardization and Modulization in project design.
This is also to Increase Adaptability and Flexibility to address the ever evolving care model.
- ii. Strategically co-locate / consolidate Clinical Services into distinct Centers of Excellence to promote Efficiency, Patient Convenience, and Physician Collaboration.
- iii. Strategically locate Ancillary, Admin, and Support Services in the middle building (D&T) for equal access to and from both IP and OP building to improve Service Outcomes; and to achieve Staffing and Space Efficiency.
- iv. Planning for Focused Growth eg. Nursing Beds, Surgery, Interventional Procedures.
This is also to increase technology adoption.
- v. Integrated Critical Support Services Best Practice Initiatives that Support and Enhance Efficiency through Breaking Down the Traditional Department Locations.
- vi. Separate and yet connected Four Pillars - Inpatient, Diag & Treatment, Dental, & Outpatient.
to support and enhance Integrated Care with Identifiable Branding Image.
This is also to reflect the local culture, traditions; and to support quality patient care.

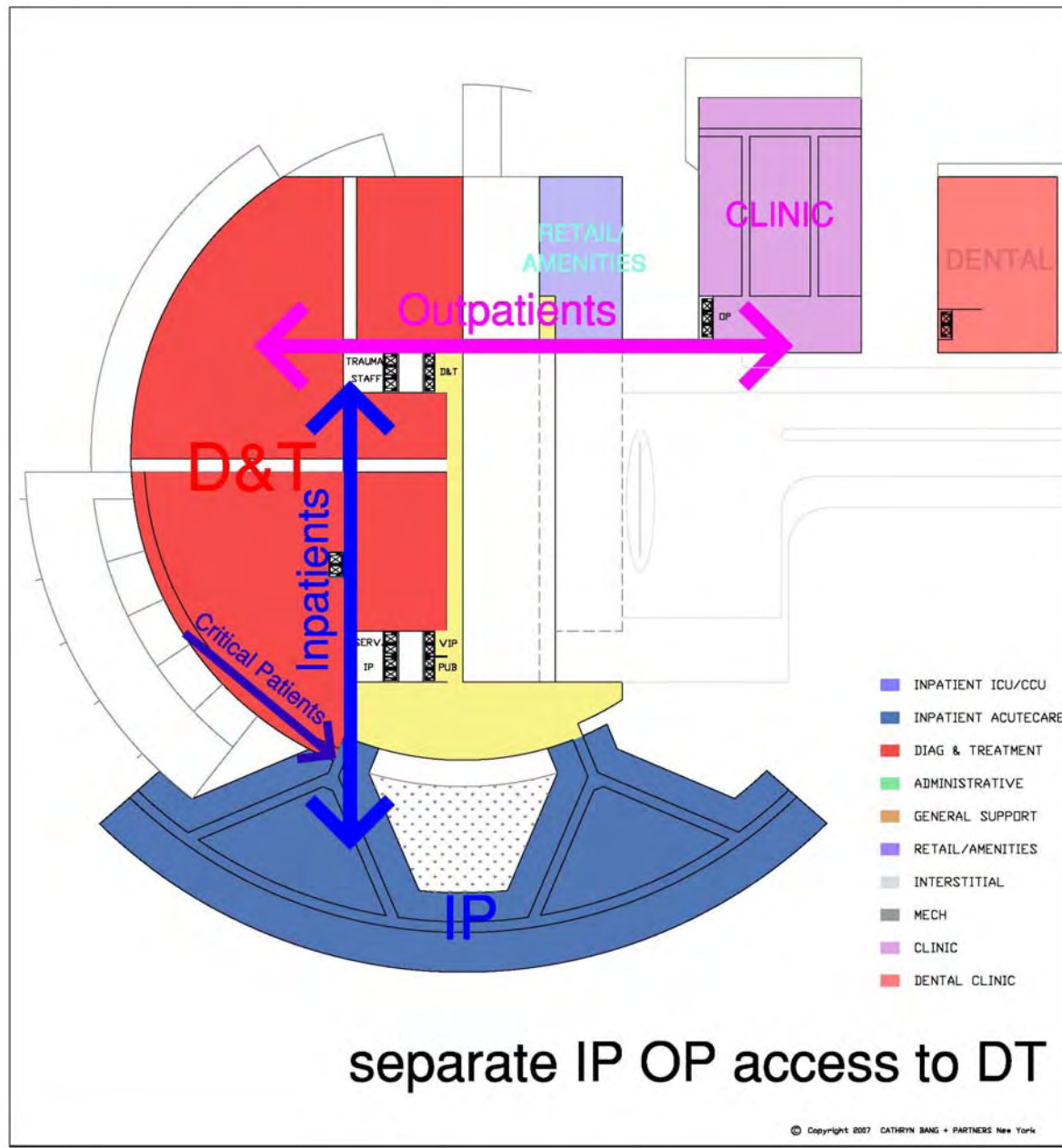
Best Practice Initiatives

© Copyright 2007 CATHRYN BANG + PARTNERS New York



Recent U.A.E. Healthcare Project Case Study
 PROJECT: New 600 bed NZMH UAE Military Hospital

CATHRYN BANG + PARTNERS New York
 Healthcare Architecture, Planning, Interiors



separate IP OP access to DT

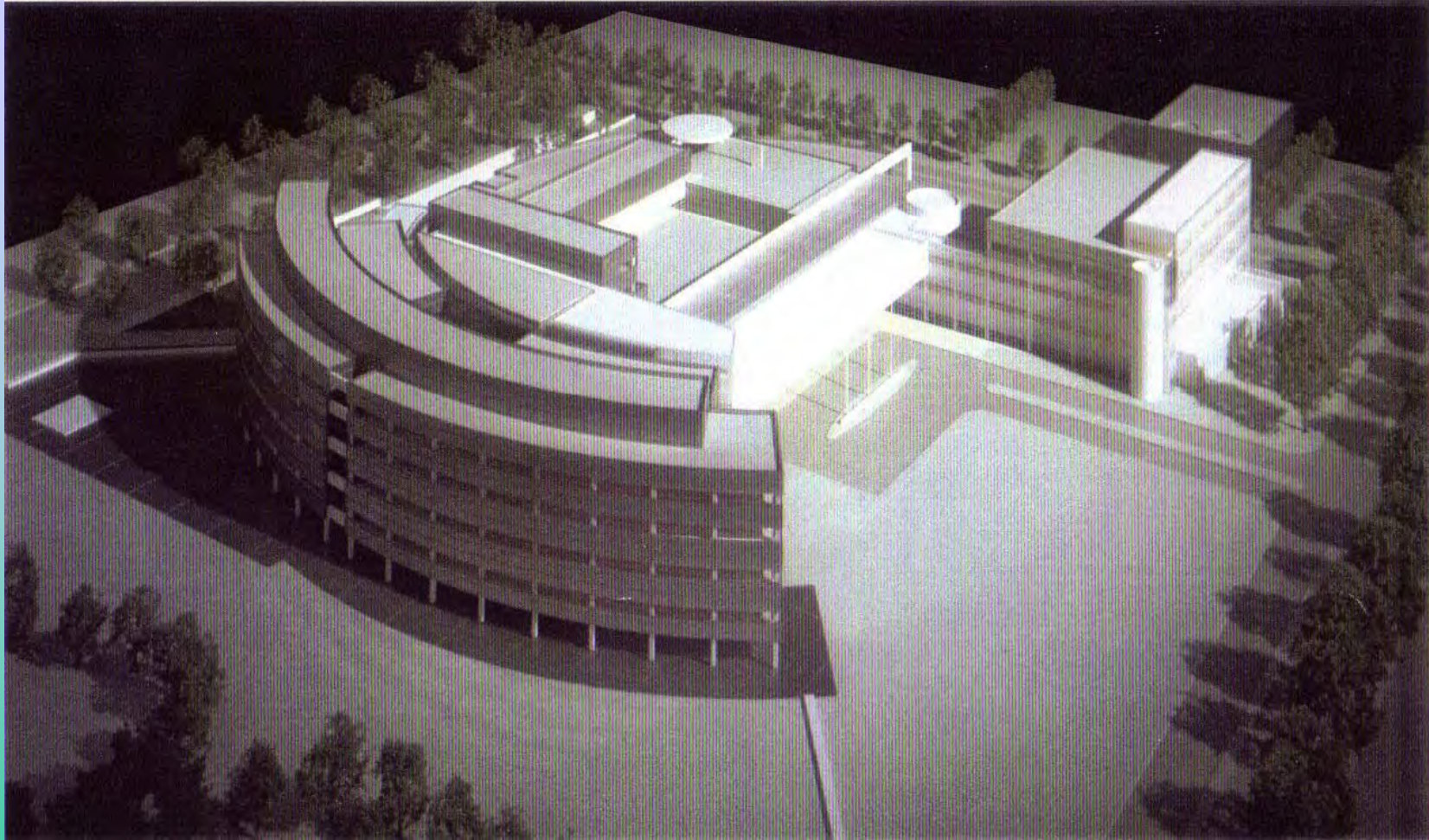
Recent U.A.E. Healthcare Project Case Study
PROJECT: New 600 bed NZMH UAE Military Hospital

CATHRYN BANG + PARTNERS New York
Healthcare Architecture, Planning, Interiors



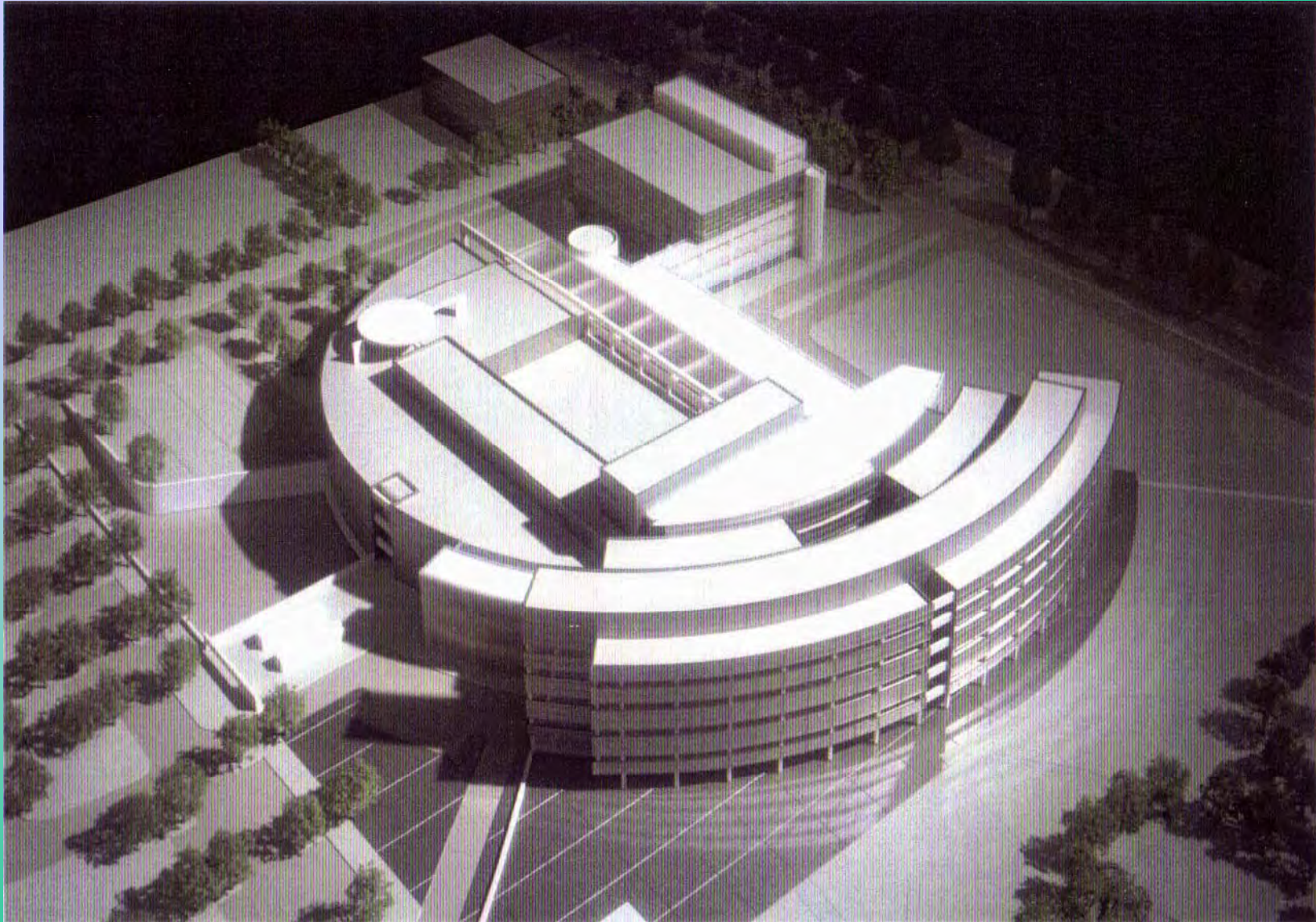
Recent U.A.E. Healthcare Project Case Study
PROJECT: New 600 bed NZMH UAE Military Hospital

CATHRYN BANG + PARTNERS New York
Healthcare Architecture, Planning, Interiors



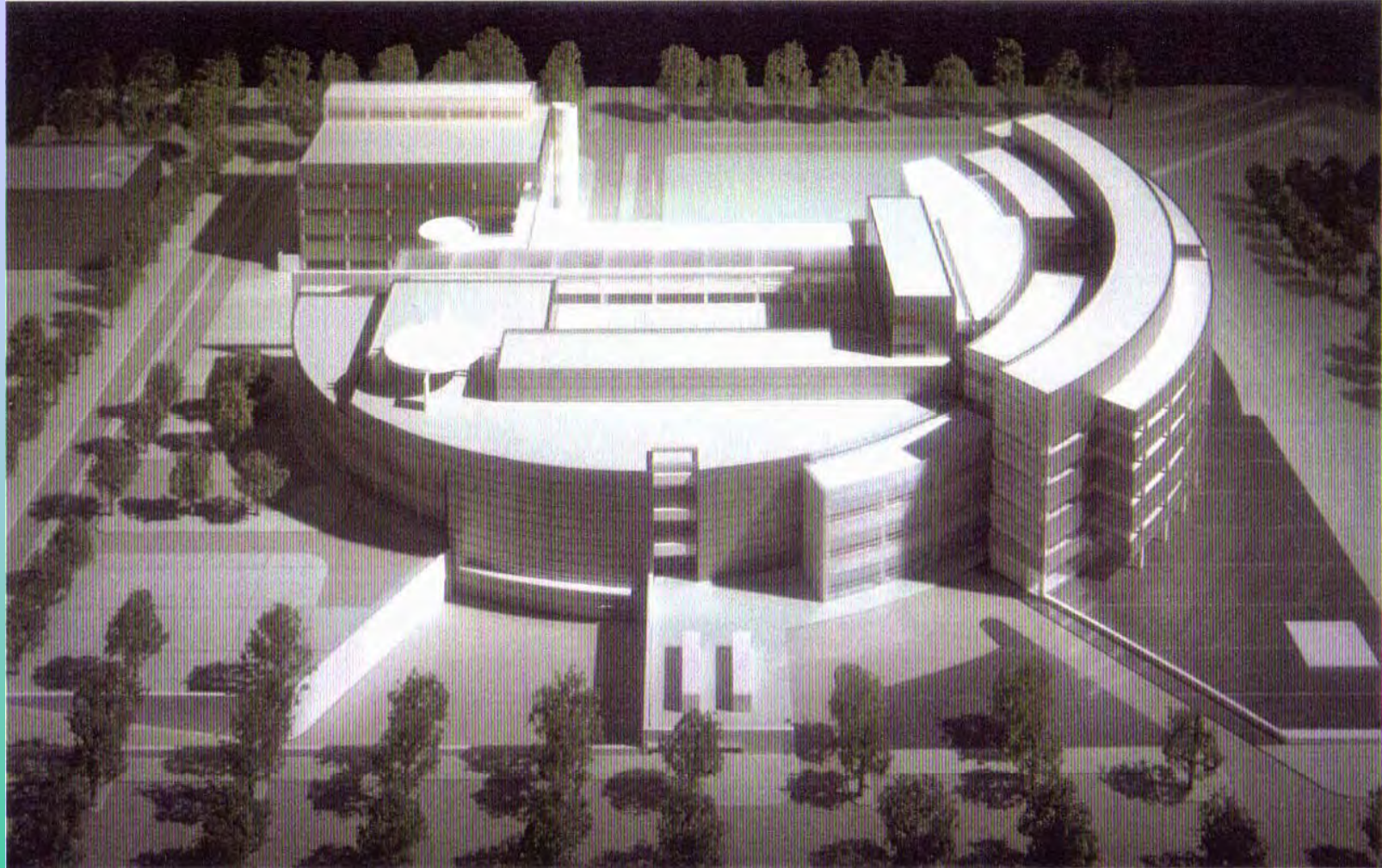
Recent U.A.E. Healthcare Project Case Study
PROJECT: New 600 bed NZMH UAE Military Hospital

CATHRYN BANG + PARTNERS New York
Healthcare Architecture, Planning, Interiors



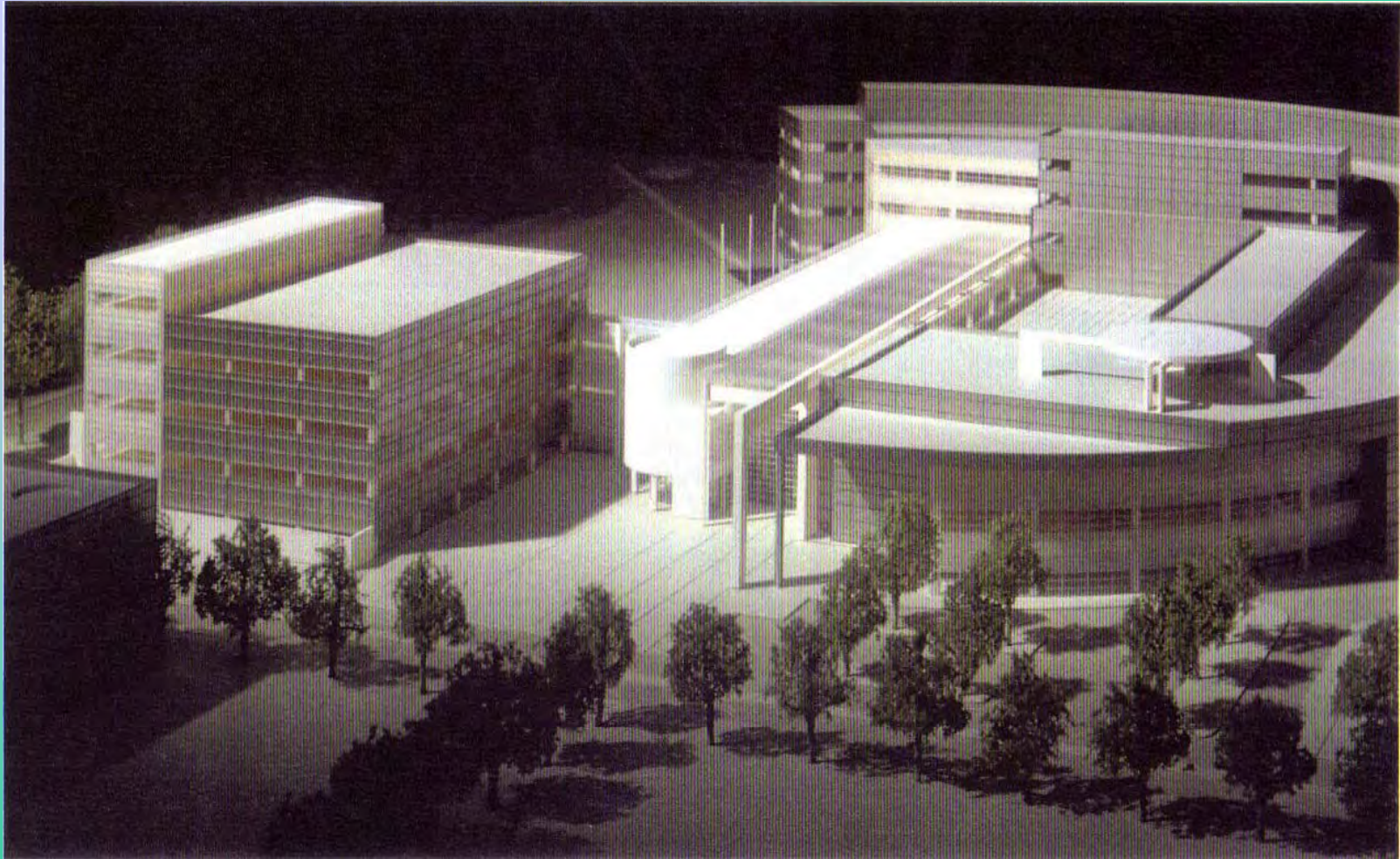
Recent U.A.E. Healthcare Project Case Study
PROJECT: New 600 bed NZMH UAE Military Hospital

CATHRYN BANG + PARTNERS New York
Healthcare Architecture, Planning, Interiors



Recent U.A.E. Healthcare Project Case Study
PROJECT: New 600 bed NZMH UAE Military Hospital

CATHRYN BANG + PARTNERS New York
Healthcare Architecture, Planning, Interiors



Recent U.A.E. Healthcare Project Case Study
PROJECT: New 600 bed NZMH UAE Military Hospital

CATHRYN BANG + PARTNERS New York
Healthcare Architecture, Planning, Interiors

New Zayed Military Hospital

Abu Dhabi, UAE

CATHRYN BANG + PARTNERS
Architecture Planning Interiors

September 17, 2007

Site Plan

- Road ways are shown within the complex with driveways to the following:
 - Loading Dock
 - Main Hospital Entrance
 - Secondary Entrance from Parking Structures
 - Emergency and Trauma Center Walk-in Entrance
 - Emergency and Trauma Center Ambulance Entrance
 - Dedicated Psychiatric Medicine Entrance
 - Physical Therapy and Rehab Medicine dedicated-entrance
 - Outpatient Clinic Building Entrance
 - VIP dedicated-entrance
- The Site Plan also shows Pedestrian Foot Passages
- A **connecting bridge** from the Parking Structures to level 1 and possible to level 2 of the Diagnostic and Treatment Center, thus creating a secondary, secured and convenient entrance to the Hospital directly from the Parking.
- In addition to the available parking structures that will hold up-to 400 cars, there are additional surface parking stalls adjacent the following critical services for the convenient and easy access:
 - Emergency Department
 - Physical Therapy and Rehab Medicine
 - Psychiatric Medicine
 - Outpatient Building
 - VIP
- While there is one Helipad located on the roof of the Diagnostic & Treatment Building, there are two additional helipads located behind the Central Plant Building, with a short and direct pathway to the Emergency Ambulance Entrance, to keep the dust and wind that will be generated from the helicopters away from visitors and employees.
- All the inpatient rooms overlook water features that are surrounded by greenery and special landscaping.

New Zayed Military Hospital

Abu Dhabi, UAE

CATHRYN BANG + PARTNERS
Architecture Planning Interiors

September 17, 2007

Building Organizations:

Private / Public Realms

The Hospital complex is comprised of separate and yet connected buildings (Three Pillars – Inpatient, Diagnostic & Treatment, Outpatient) thus allowing ease of movement between the buildings and consolidated support services to address the needs of the entire complex.

- Public areas are separated from Service areas.
- Inpatient areas are separated from Outpatient areas.

Separate Inpatient and Outpatient Access to Diagnostic & Treatment Services

- The Diagnostic and Treatment is centrally located to support the inpatient and outpatient.
- Inpatient flow is separated from Outpatient flow.
- In addition, direct and secured path for Critical Patient flow is provided.

Separate Elevators Cores for Different Populations

Elevator Core #1:
D&T – 3 banks

Elevator Core #2:
VIP – 2 banks
Visitors – 2 banks

Elevator Core #3:
Inpatients – 2 banks
Staff/Service - 2 banks

Elevator Core #4:
Dedicated Emergency & Trauma – 1 bank
Staff/Service – 2 banks

New Zayed Military Hospital

Abu Dhabi, UAE

CATHRYN BANG + PARTNERS
Architecture Planning Interiors

September 17, 2007

Stacking Plans:

The proposed Stacking Plan promotes Quality and Efficiency through

- Minimized Patient Movement
- Decreased Staffing and Equipment by eliminating unnecessary redundancy
- Reduced Program Space by consolidating similar services
- Reduced project Construction Cost and Time, accordingly.

* The proposed plans can still achieve the above planning benefits even if the circular curve massing becomes straight lines. However, our planning intention is to inspire the Clients to build a unique architectural building that embodies the highest aspirations and that convey their hard core power to change current healthcare delivery.

** Our proposed plans are to illustrate new ways to inspire and to incorporate advanced protocols and applications and will shape the quality continuum of care, to be the '**Beacon of Progress**' for the Healthcare; and to *deter* the Clients from building the new "old hospital" that is institutional and monolithic.

Curve massing will minimize the institutional aspects of linear building that usually consist of visible long corridors and doors that constitute conventional institutional environment.

(With the curved corridor, one will not see the end of the long corridor and constantly appearing doors.)

Nursing Unit Design

- The key attribute of our Stacking Plans is curved triangular nursing units where the visibilities from the Nurse Station to the Patients rooms are greater to meet the increasing higher acuity patient populations' needs.

Patient rooms are not looking directly to each others windows (not like linear nursing units looking directly at other units' patient room windows); therefore, privacy can be increased with our proposed plans.

^ Also, VIP rooms can be located with greater privacy at either the extreme ends of each triangular unit or the outer center curves.

Two Nursing Units are connected for the Swing Bed capabilities for operational efficiencies and for shared Support Space opportunities to optimize staffing and space efficiencies.

New Zayed Military Hospital

Abu Dhabi, UAE

CATHRYN BANG + PARTNERS
Architecture Planning Interiors

September 17, 2007

Therapeutic Garden Courtyard (or Atrium) is proposed between two Patient Units for view to the outdoors and landscapes.

- Of special note, two ICU/CCU and one Acute Care are proposed on the similar Floor Plate to provide future conversion capabilities, to allow accommodation of higher acuity patients as need arises in the future, with minimum remodel.

Multi-story high Atrium Lobby

- Energy efficient Atrium is located between the Front Entrance and the Diagnostic and Treatment Building which opens from the roof to the ground floor thus creating a modern ambience.

Courtyard as Place of Respite

- Courtyard is located on 3rd Floor to provide secured, respite space for patients, staff, and family members.

B Level

- Most of the general support departments are located in the basement level of the Diagnostic and Treatment (D&T) Building and the Inpatient Building.

A connecting corridor connects the D&T building with the Outpatient Building thus achieving optimal consolidation, integration and collaboration of the general support services.

- A special hazard storage/vendor pick-up area is dedicated for storage and treatment of medical waste.
- The loading dock is large enough to support all services in the complex.
- The Materials Management Department is sized large enough to handle the needs of the institution but it shall still rely on replenishment from an external large warehouse, incorporating **just-in-time** efficient operational protocol.
- The inpatient pharmacy will dispense medication through the 'dumb waiter' to D&T departments above for vertical transport and via pneumatic tube system throughout the Medical Center. An Automated Pharmacy and Supplies Dispensing System are proposed in the medical equipment and IT budget.
- CSSD is proposed to be located on the Basement with dedicated '2 smart elevators' (separate clean and soiled) for vertical transport of case carts to Endoscopy and Surgery Departments.

New Zayed Military Hospital

Abu Dhabi, UAE

CATHRYN BANG + PARTNERS
Architecture Planning Interiors

September 17, 2007

- Kitchen is proposed to be located on the Basement with dedicated '2 dumb waiters' for vertical transport of dietary carts to Patient Nursing Units.
- IT department is strategically located to support all buildings. The IT department will employ the latest technologies in Hospital Information System (HIS), Clinical Information System (CIS), Wireless communication, Financial System, and integration of medical equipment with the HIS / CIS Systems.
- Medical Records is strategically located for future conversion of portion of the department space to other patient support services when all EMR and space need is reduced.

Ground Floor

- The Emergency Department shall have dedicated 24 hour Radiology consist of a CT and X-ray equipments for faster and more efficient point of care of emergency patients.

Emergency Department shall be vertically connected to Radiology Department floor above for secluded and efficient patient access.

- The Outpatient Psychiatry department is next to the Inpatient Psychiatry department and has a dedicated entrance. In addition, a therapeutic garden shall be located in the inpatient psychiatry department to allow for better healing and greater patient family interaction.

Additional outdoor area (or covered air-conditioned area) can be extended to inpatient psychiatry area to allow for activities and exercise.

- Rehabilitation is located on the ground floor in order to serve both the inpatients and the outpatients. This affords easy and safe flow of patients in and out of the department.

Also, as a positive program attribute, a semi outdoor exercise area is proposed in addition to surface parking access directly adjacent to the dedicated entrance on the back.

- The Amenities including Health Education Resources and Food Retailers are proposed on the Ground Floor for convenient access for outpatients and visitors.

New Zayed Military Hospital

Abu Dhabi, UAE

CATHRYN BANG + PARTNERS
Architecture Planning Interiors

September 17, 2007

First Floor

- There is a connecting corridor that also connects the D&T building with the Outpatient Building for convenient access.
- The Amenities are located on this Floor to service large population that uses this Diagnostic Services Floor.
- The Radiology is consolidated on the first floor in order have more efficient operations. Its location creates less congestion, pleasant healing environment and avoids having patients on stretchers and heavy foot traffic that is traditionally present of the ground floor.
- The Radiology Department is located above the emergency department (vertical adjacency) for easy access by a dedicated elevator to some of the most sophisticated equipment.

Floors will be reinforced for heavy equipments transports; and exterior window /wall access panel will be constructed to accommodate initial installation and future replacement of MRI equipment and other heavy equipment.

- The Endoscopy and Non-Invasive Cardiology, and Invasive Cardiology Departments are horizontally adjacent to the Radiology Department to provide patient and physician convenience which is a high efficiency factor.

This is now a popular concept to consolidate several diagnostic services that share a common support and nursing staff for specialized procedures.

In addition, when necessary, this co-location of Radiology and Cardiology will allow convergence of Imaging and Cardiology horizontally to promote interdisciplinary care for patient-centered protocol and specialty collaboration for integrated care.

- The Imaging / Radiology support services and offices are located on the same floor and next to the Imaging Department in order to achieve better staff productivity.
- There are four ICU / CCU units on the first floor each with private rooms and all are intended to achieve swing capability, flexibility and consolidation of support areas between units.

Triangular nursing units are proposed for the most visibilities from Nurse Station to the Patients rooms.

New Zayed Military Hospital

Abu Dhabi, UAE

CATHRYN BANG + PARTNERS
Architecture Planning Interiors

September 17, 2007

Second Floor

- The Operating Theaters are located on the second floor with easy of access (vertical) to the ICU / CCU units below.
- Anesthesia & Pain Management is next to the theaters to achieve greater staff efficiency.
- The Laboratory is located next to the operating theaters as stat lab since most of the lab work will be outsourced.

Third Floor and Above

- Executive Administration, Nursing Administration, Financing, and Quality Control/Utilization Review/Risk Management Services are proposed to be located on this top floor of the D&T Block that provides both required privacy as well as public access to provide high patient relations services. The proposed location has direct adjacency to Education.
- All of the Acute Care areas will be located from the third floor and above.
This vertical connectivity will promote the desirable collaborations and cooperation between similar services.

The Triangular effect of the Acute Care areas will provide greater visibilities from the Nurse Station to the Patients rooms and improved patient care.

Also, VIP rooms can be located at either the ends of each triangular unit or the outer center curves. Patient rooms are not looking directly to each others windows (not like linear nursing units looking directly at other units' patient room windows); therefore, visual separation, acoustical separation and privacy can be increased with our proposed plans.

Proximity Relationships

MATERIALS MANAGEMENT:

Staff Elevators
CSSD

PHARMACY:

Emergency & IP Elevators

CSSD:

Surgery via Clean & Soiled Cart Lifts
Materials Management/Receiving Dock

LAUNDRY:

Materials Management/Receiving Dock
Staff/Service Elevators

HOUSEKEEPING:

Materials Management/Receiving Dock
IP Elevators

FOOD SERVICES:

Receiving Dock
Staff Elevators

MORGUE:

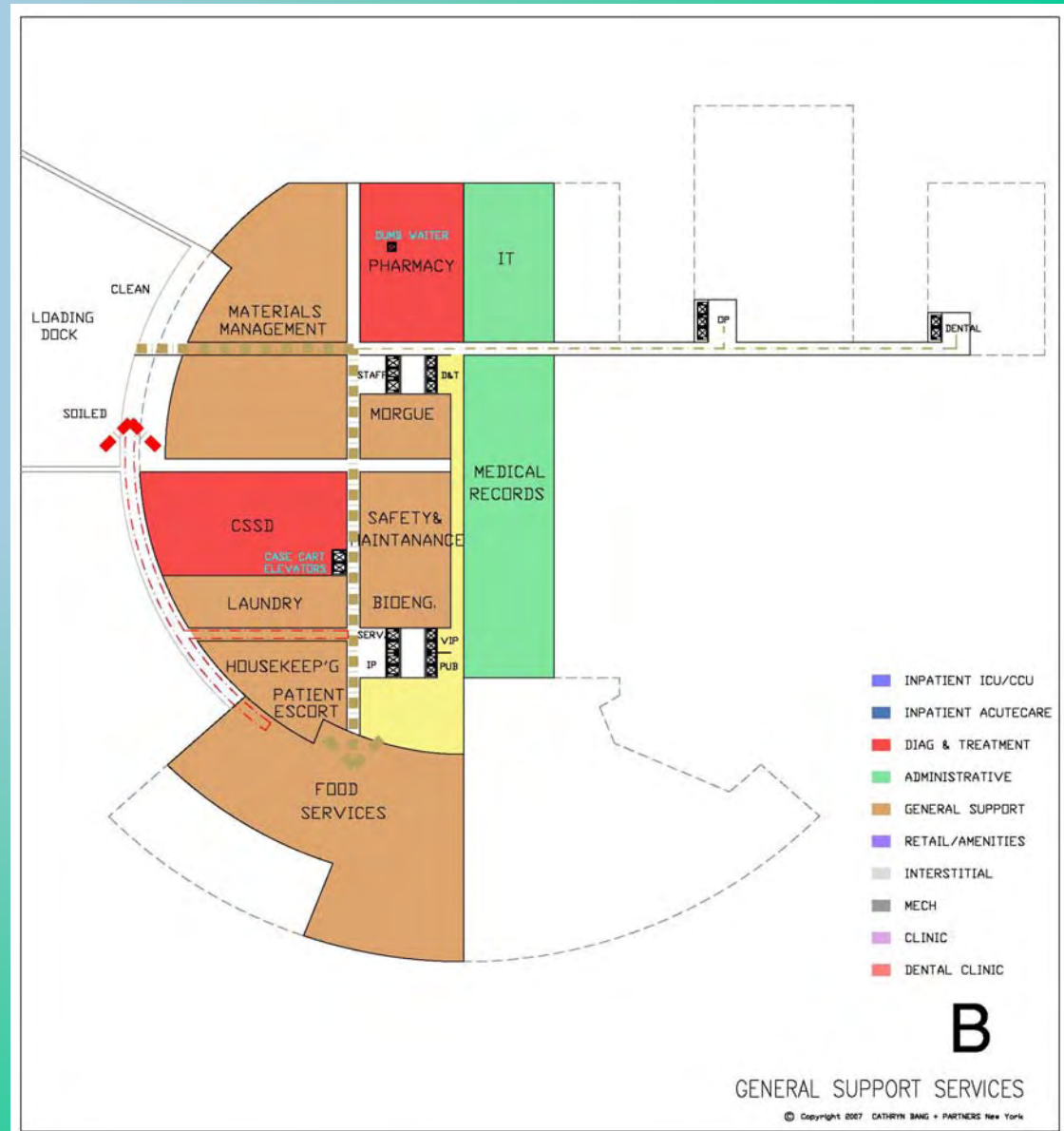
Staff Elevators
Dock

MAINTENANCE:

Clinics
Surgery

BIOENGINEERING:

Radiology
Surgery
Inpatient Elevators
Receiving Dock



Proximity Relationships

EMERGENCY:

Radiology
Surgery
Endoscopy
IP Elevators
Trauma Elevator

REHAB:

Surface Parking
Dedicated Rehab Entrance
IP Elevators

DIALYSIS:

OP Entrance
IP Elevators

NEPHROLOGY:

Dialysis
IP Elevators

ADMITTING:

Hospital Entrance

SOCIAL WORK:

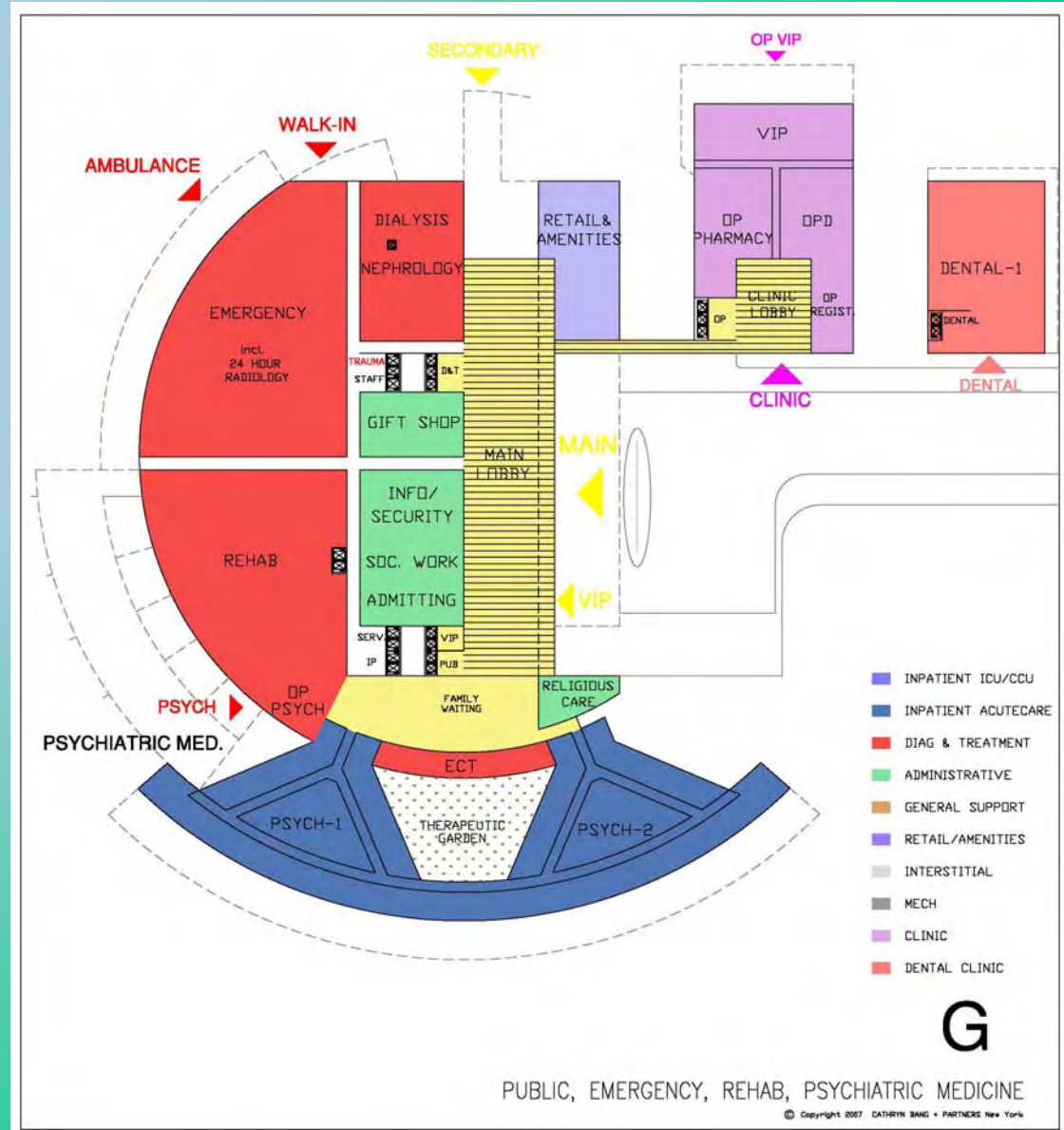
Hospital Entrance
IP Elevators

ECT / OP PSYCH:

IP Psych
Dedicated Psych Entrance

IP PSYCH:

Dedicated Psych Entrance
ECT



Proximity Relationships

RADIOLOGY:

- Emergency
- Non-Invasive Cardiology
- Invasive Cardiology
- Endoscopy

NEUROLOGY TESTING:

- Radiology
- IP Elevators

ENDOSCOPY:

- IP Elevators
- OP Clinic Entrance

NON –INVASIVE CARDIOLOGY:

- Invasive Cardiology
- Radiology

INVASIVE CARDIOLOGY:

- CCU
- Surgery
- Non-Invasive Cardiology
- Radiology

RESPIRATORY THERAPY:

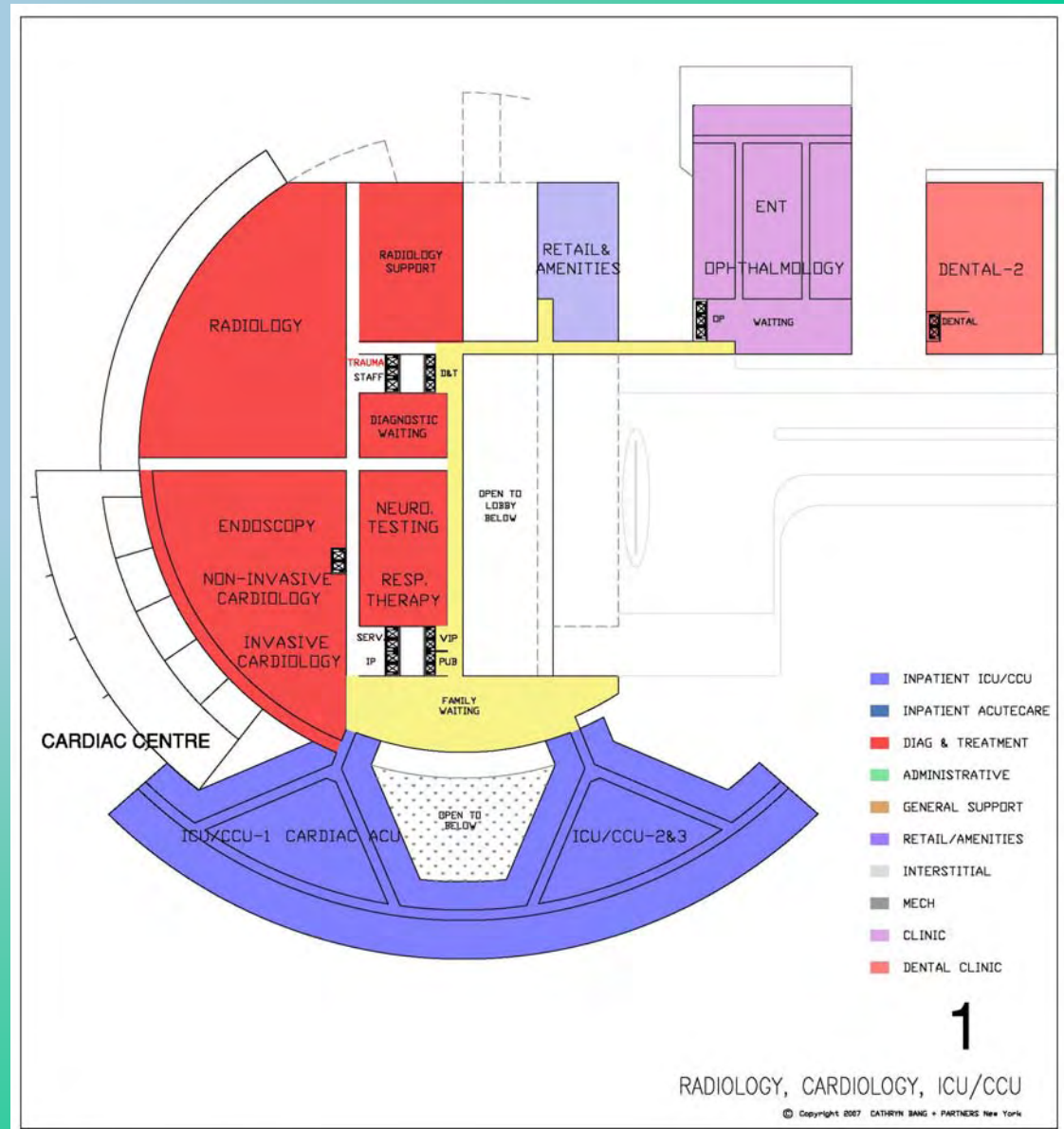
- ICU/CCU

IP ICU/CCU:

- Respiratory Therapy
- Emergency
- Surgery
- Pharmacy
- Laboratory

CARDIAC ACUTE CARE

- CCU
- Invasive Cardiology



Proximity Relationships

SURGERY:

- ICU/CCU
- Emergency
- Radiology
- CSSD
- IP Elevators
- Trauma Elevator

PAIN MANAGEMENT:

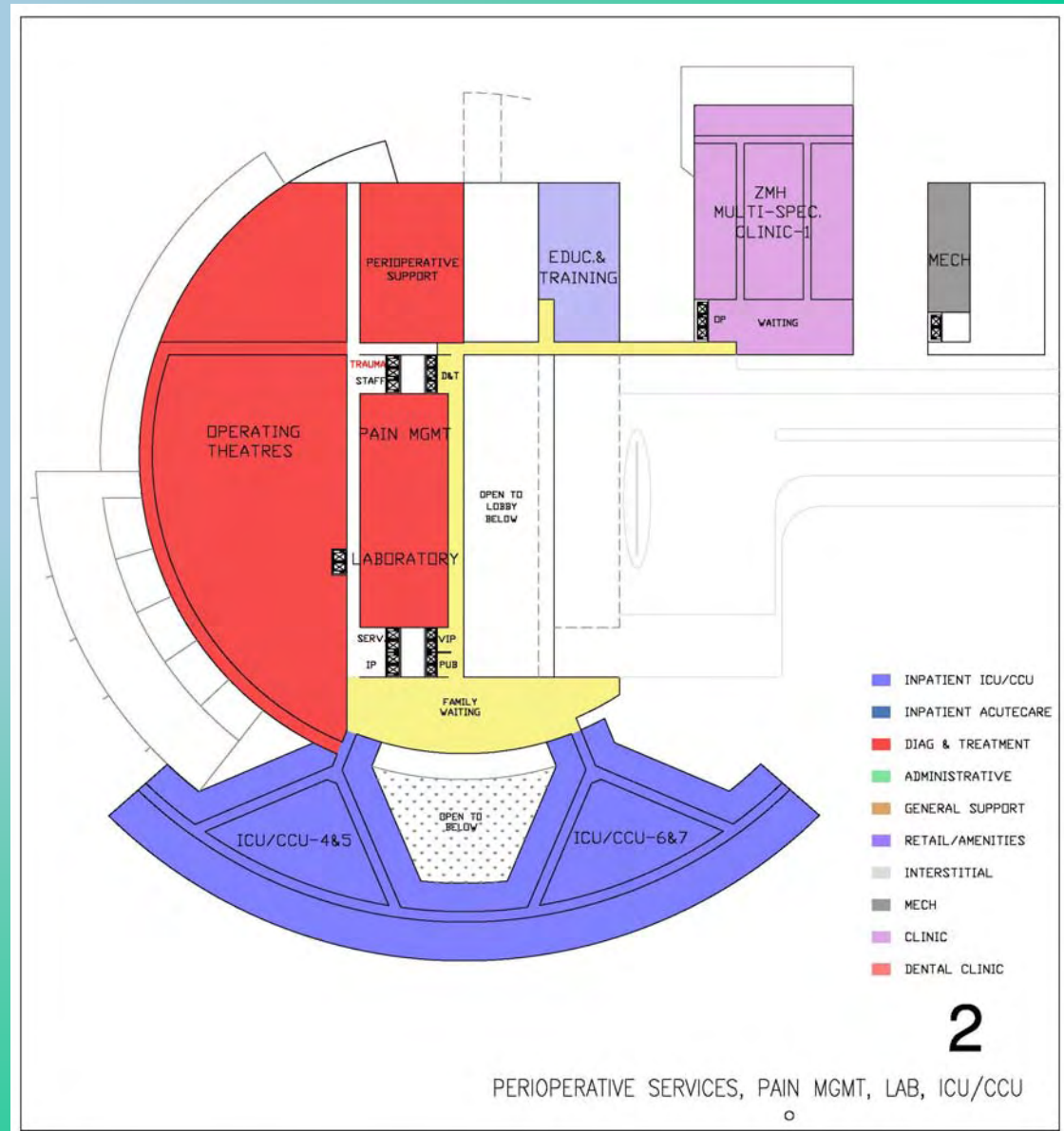
- Surgery
- ICU/CCU
- OP Clinics

LABORATORY:

- Staff Elevators
- Surgery

IP ICU/CCU:

- Respiratory Therapy
- Emergency
- Surgery
- Pharmacy
- Laboratory



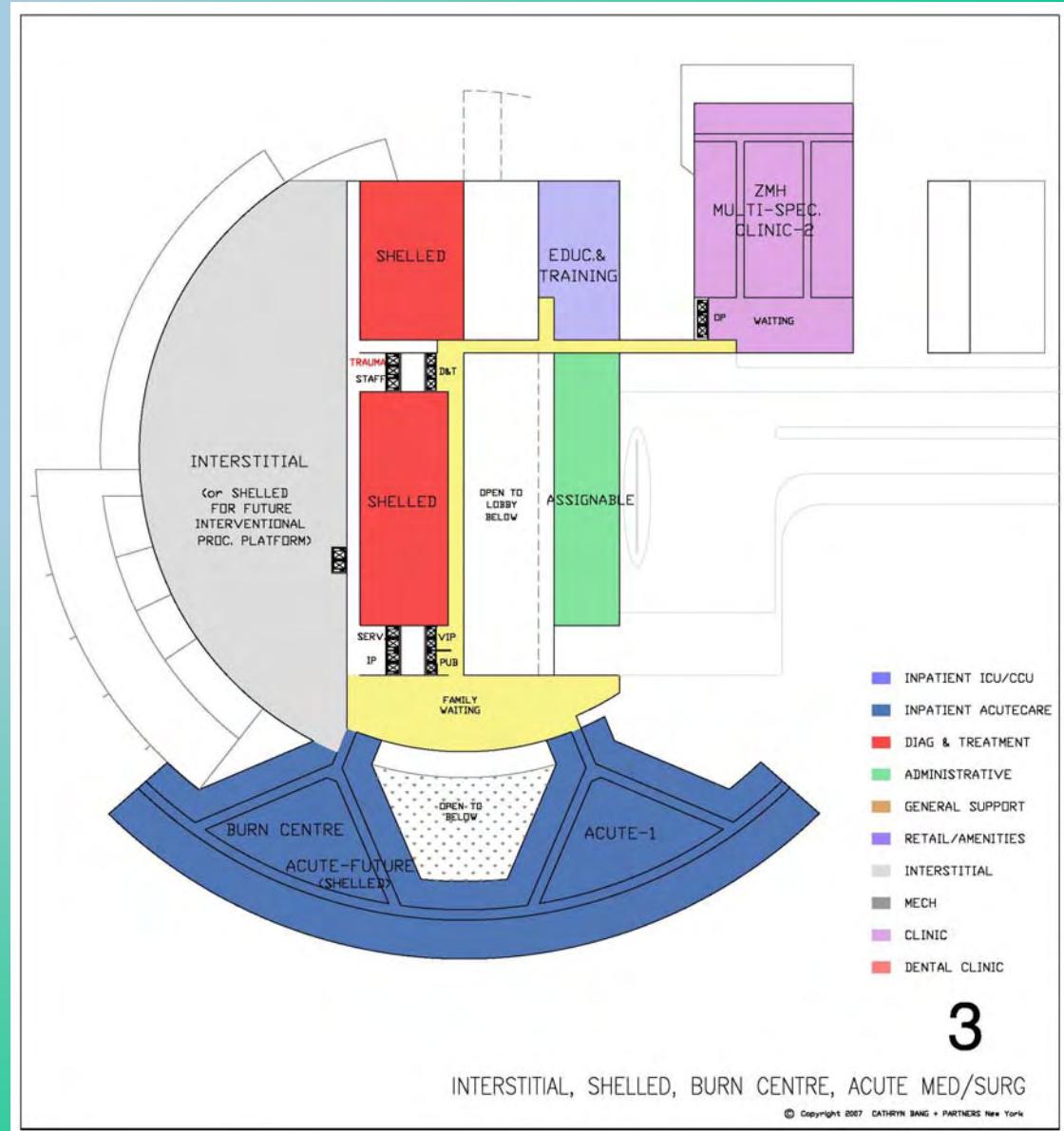
Proximity Relationships

IP BURN CENTER:

Surgery
Emergency
Radiology

IP ACUTE CARE UNITS:

Surgery
Radiology
ICU/CCU



Proximity Relationships

EXECUTIVE ADMINISTRATION:

Nursing Administration
Education Center

FINANCE:

Executive Administration

NURSING ADMINISTRATION:

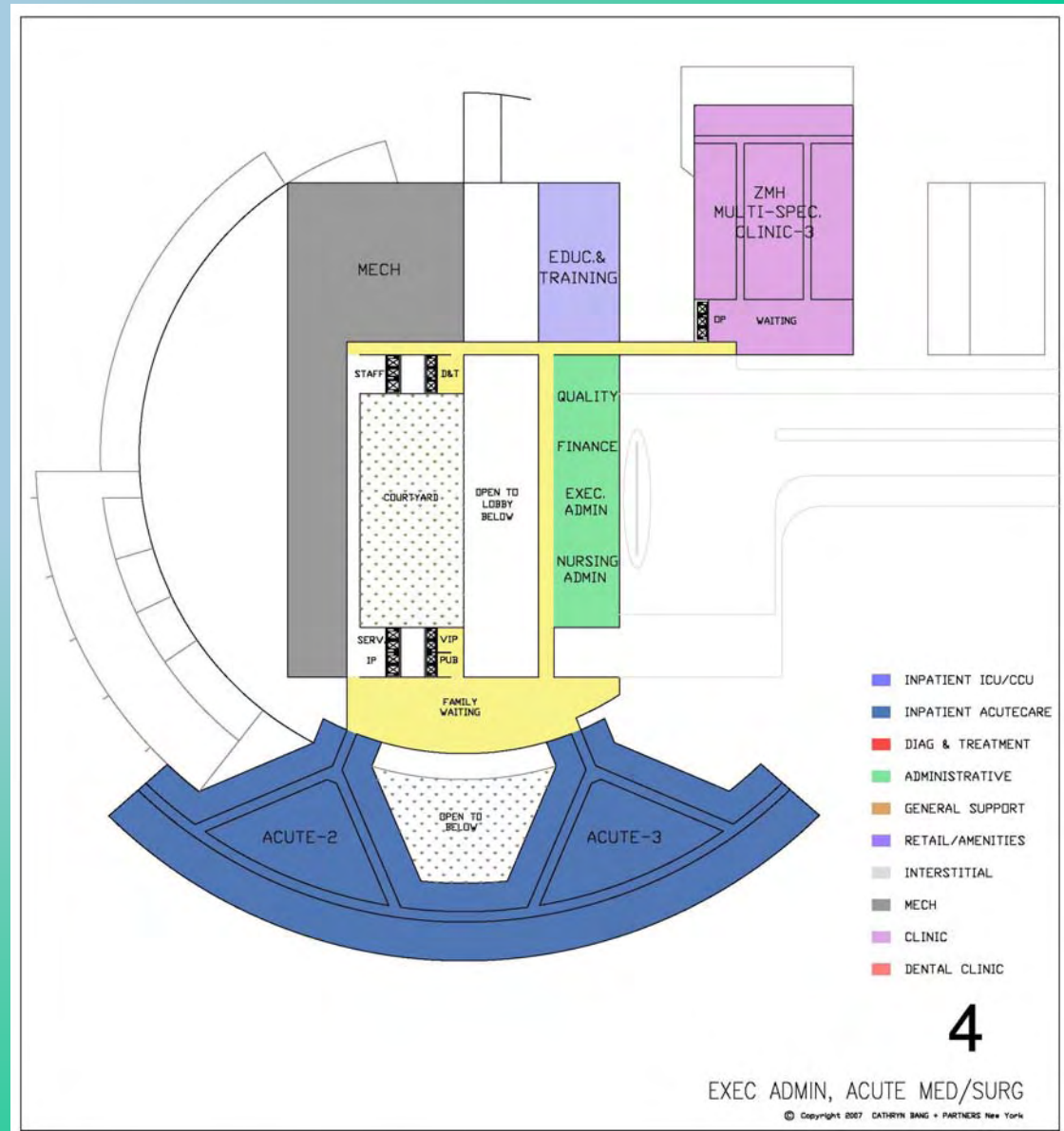
Executive Administration
IP Units
Emergency

QUALITY ASSURANCE/UR/RISK MGMT:

IP Units
Clinics
Education Center

IP ACUTE CARE UNITS:

Surgery
Radiology
ICU/CCU



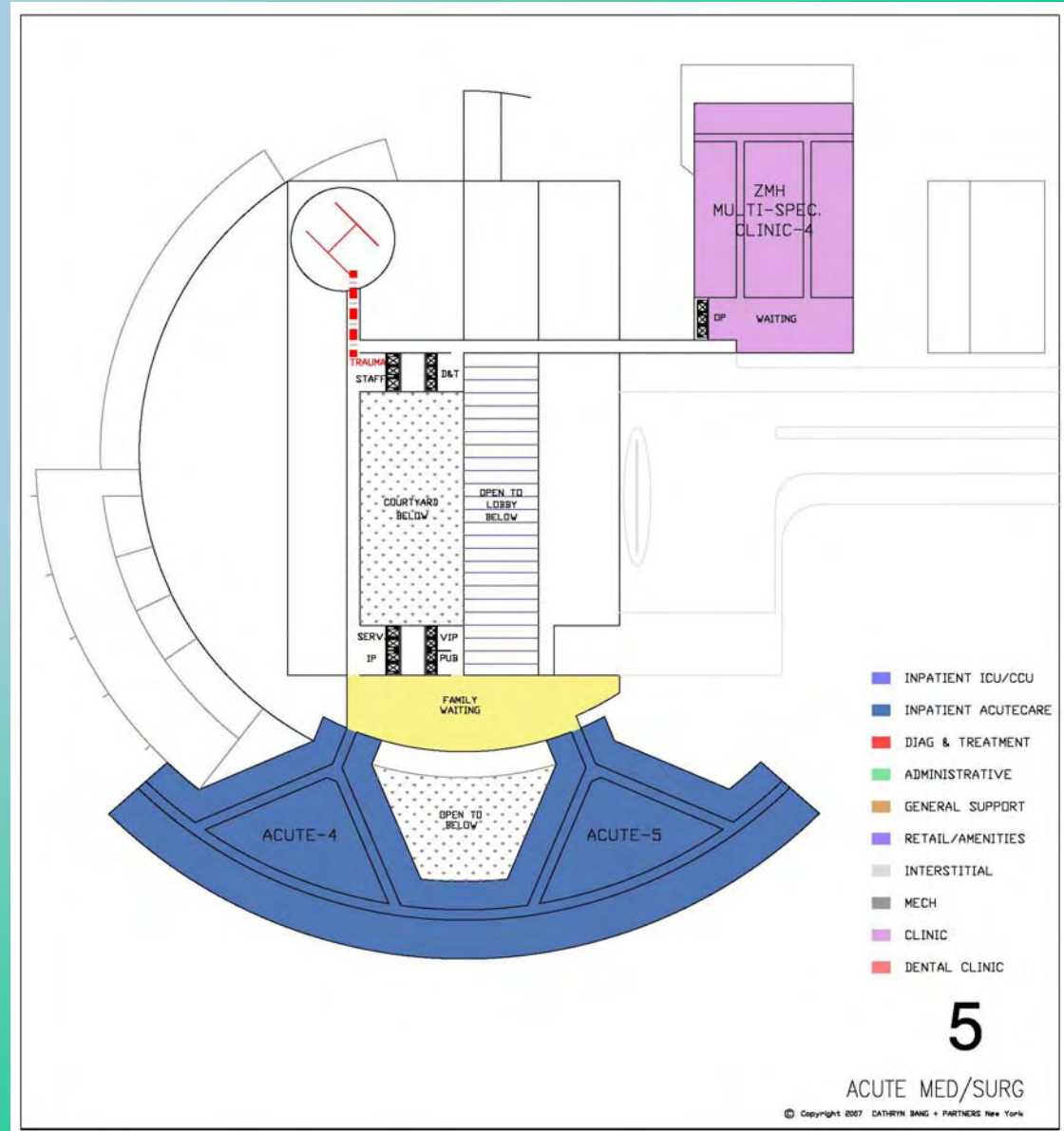
Proximity Relationships

HELIPORT:

Trauma Elevator
Staff Elevators

IP ACUTE CARE UNITS:

Surgery
Radiology
ICU/CCU



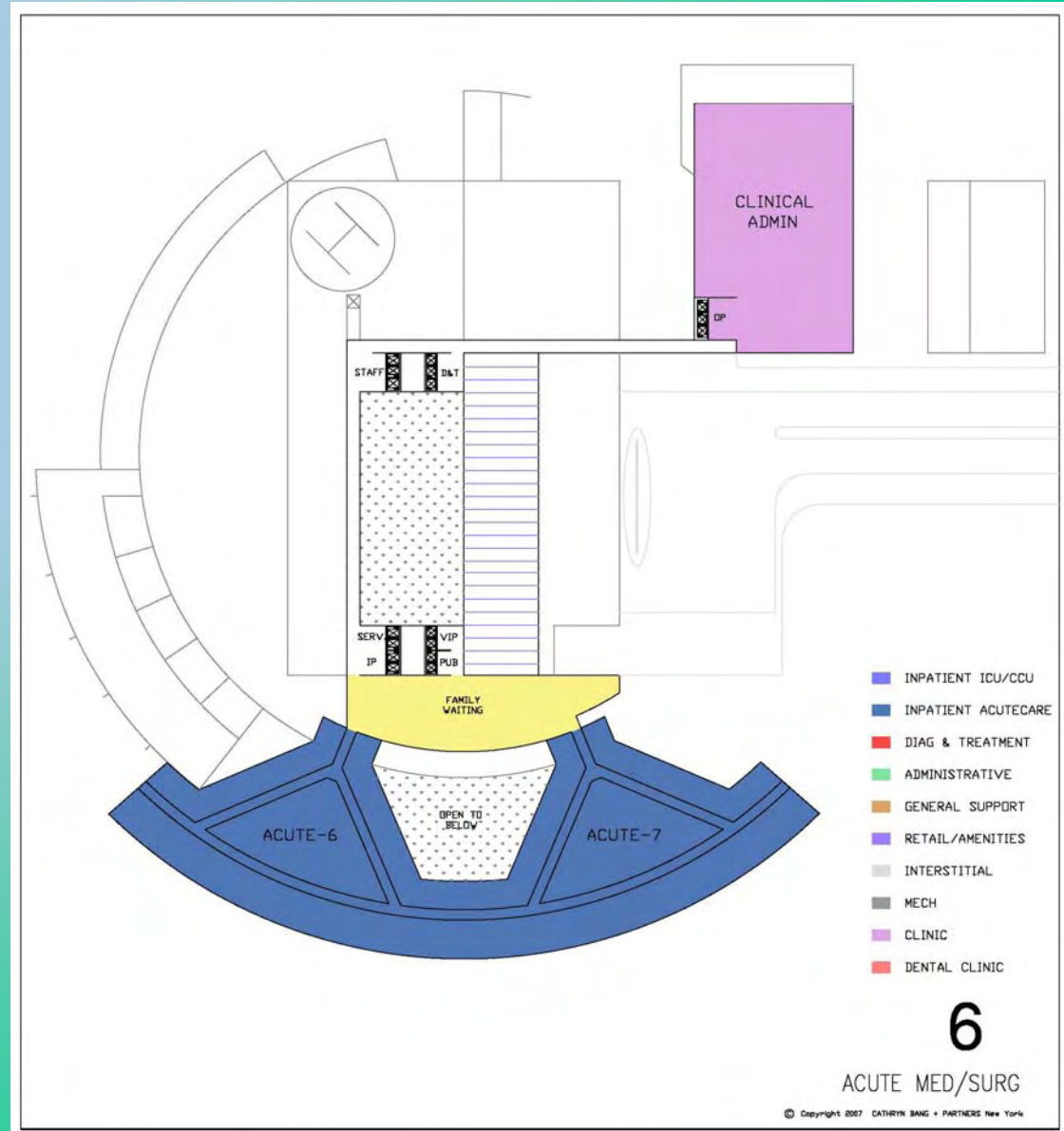
Proximity Relationships

IP ACUTE CARE UNITS:

Surgery
Radiology
ICU/CCU

CLINICAL ADMINISTRATION:

OP Clinics
Education Center



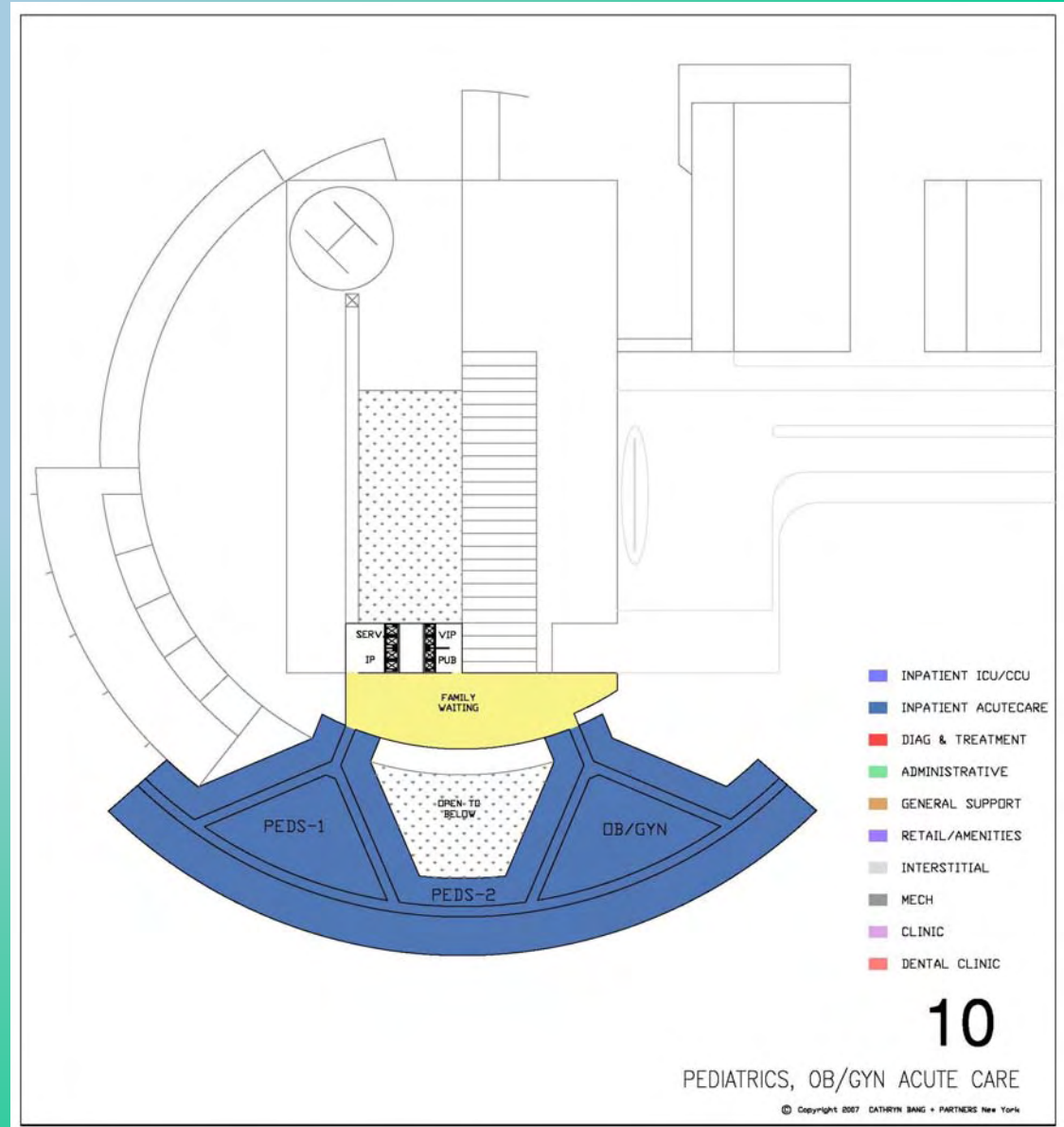
Proximity Relationships

IP PEDIATRICS ACUTE CARE UNITS:

Surgery
Radiology
ICU/CCU

IP OB/GYN ACUTE CARE UNIT:

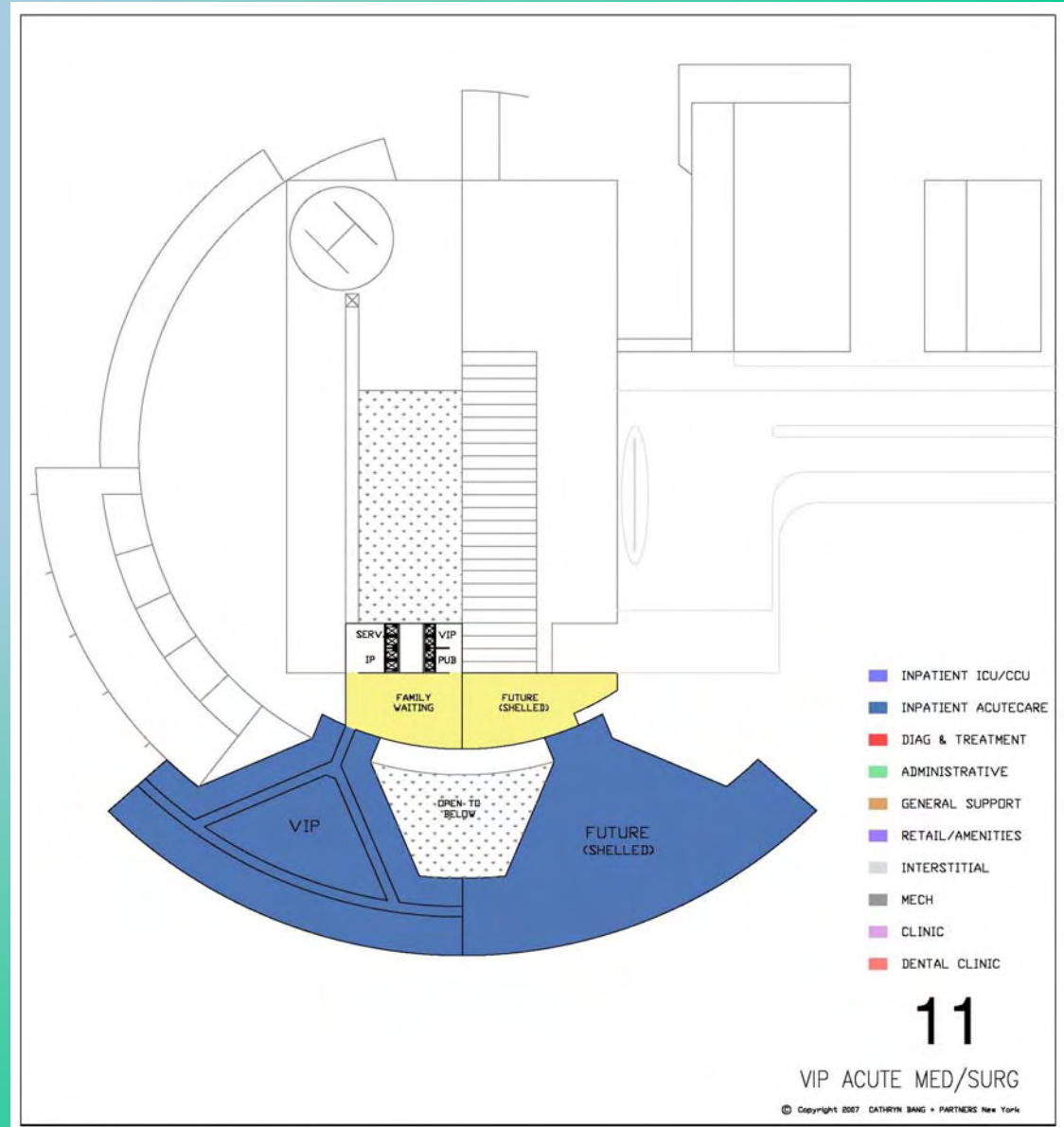
Surgery
OP Clinics
ICU/CCU



Proximity Relationships

IP VIP UNIT:

- Dedicated VIP Elevator
- Dedicated VIP Entrance



New Zayed Military Hospital
Abu Dhabi, UAE

CATHRYN BANG + PARTNERS
Architecture Planning Interiors

SUMMARY ANALYSIS

PROJECTED PROGRAM

600 bed Trauma Center

September 17, 2007

SERVICE	SOA Prog (DGSM)	% of Total	Stacking Plan Proposed Location (Bldg/Floor)
INPATIENT SERVICES - 608 beds			
IP Adult Care - 410 beds	30,751	30.19%	IP BLDG FL. 3, 4, 5, 6, 7, 8, 9
IP Critical Care - 84 beds	8,053	7.91%	IP BLDG FL. 1, 2
IP OB/GYN Care - 8 beds	532	0.52%	IP BLDG FL. 10
IP Paediatric Care - 48 beds	3,694	3.63%	IP BLDG FL. 10
IP Burn Centre - 8 beds	710	0.70%	IP BLDG FL. 3
IP Psychiatry, Male - 20 beds	1,611	1.58%	IP BLDG FL. G
IP Psychiatry, Female - 20 beds	1,611	1.58%	IP BLDG FL. G
IP VIP Suite - 10 beds	2,108	2.07%	IP BLDG FL. 11
Subtotal	49,070	48.17%	
DGSM/Bed Ratio	81	DGSM/BED	
DIAGNOSTIC & TREATMENT SERVICES			
Central Sterile Supply & Distribution	809	0.79%	D & T BLDG FL. B1
Anaesthesia - PMC	378	0.37%	D & T BLDG FL. 2
Operating Theatre	4,854	4.76%	D & T BLDG FL. 2
Endoscopy	592	0.58%	D & T BLDG FL. 1
Accident & Emergency Dept	2,273	2.23%	D & T BLDG FL. G
Pharmacy	1,215	1.19%	D & T BLDG FL. B1; CLINIC BLDG FL. G
Radiology	2,750	2.70%	D & T BLDG FL. 1
Physical Medicine & Rehab	2,375	2.33%	D & T BLDG FL. G
ECT	137	0.13%	IP BLDG FL. G
Respiratory Therapy	230	0.23%	D & T BLDG FL. 1
Neurological Testing	242	0.24%	D & T BLDG FL. 1
Non-Invasive Cardiology	415	0.41%	D & T BLDG FL. 1
Invasive Cardiology	507	0.50%	D & T BLDG FL. 1
Laboratory and Blood Bank	799	0.78%	D & T BLDG FL. 2
Morgue	63	0.06%	D & T BLDG FL. B1
Social Work	153	0.15%	D & T BLDG FL. G
Subtotal	17,792	17.47%	
ADMINISTRATIVE SERVICES			
Medical Records	2,924	2.87%	D & T BLDG FL. B1
Executive Admin/Patient Relations	533	0.52%	D & T BLDG FL. 4
Nursing Administration	747	0.73%	D & T BLDG FL. 4
Information Technology	740	0.73%	D & T BLDG FL. B1
Finance and Admitting	452	0.44%	D & T BLDG FL. G, 4
Quality/Risk Mgmt/UR	290	0.28%	D & T BLDG FL. 4
Religious Care	280	0.27%	D & T BLDG FL. G
Gift Shop	162	0.16%	D & T BLDG FL. G
Retails and Amenities for Rental	1,184	1.16%	RETAIL BLDG FL. G, 1
Subtotal	7,312	7.18%	
EDUCATION & TRAINING			
Education and Training	2,498	2.45%	RETAIL BLDG FL. 2, 3, 4
Subtotal	2,498	2.45%	

New Zayed Military Hospital
Abu Dhabi, UAE

CATHRYN BANG + PARTNERS
Architecture Planning Interiors

SUMMARY ANALYSIS

PROJECTED PROGRAM

600 bed Trauma Center

September 17, 2007

SERVICE	SOA Prog (DGSM)	% of Total	Stacking Plan Proposed Location (Bldg/Floor)
GENERAL SERVICES			
Bioengineering	187	0.18%	D & T BLDG FL. B1
Housekeeping	744	0.73%	D & T BLDG FL. B1
Laundry	39	0.04%	D & T BLDG FL. B1
Safety & Maintenance	901	0.88%	D & T BLDG FL. B1, G
Materials Management	2,654	2.61%	D & T BLDG FL. B1
Food Services - Dietetics	657	0.64%	IP BLDG FL. B1
Food Services - Kitchen & Catering	2,524	2.48%	IP BLDG FL. B1; RETAIL BLDG FL. G
Patient Escort	202	0.20%	D & T BLDG FL. B1
Subtotal	7,908	7.76%	
OUTPATIENT SERVICES			
Dialysis	372	0.37%	D & T BLDG FL. G
Nephrology Clinic	239	0.23%	D & T BLDG FL. G
OP Psychiatry	358	0.35%	D & T BLDG FL. G
Ophthalmology Clinic	604	0.59%	CLINIC BLDG FL. 1
ENT Clinic	902	0.89%	CLINIC BLDG FL. 1
ZMH Outpatient Multispeciality Clinic	7,713	7.57%	CLINIC BLDG FL. 2, 3, 4, 5
VIP Clinic	427	0.42%	CLINIC BLDG FL. G
Neurology Administration	217	0.21%	CLINIC BLDG FL. 6
Orthopaedics Administration	498	0.49%	CLINIC BLDG FL. 7
Plastic Surgery Administration	164	0.16%	CLINIC BLDG FL. 7
Urology Administration	196	0.19%	CLINIC BLDG FL. 6
OB/GYN Administration	217	0.21%	CLINIC BLDG FL. 6
Cardiology Administration	244	0.24%	CLINIC BLDG FL. 6
Dermatology Administration	217	0.21%	CLINIC BLDG FL. 6
Oncology Administration	100	0.10%	CLINIC BLDG FL. 7
Surgery Administration	563	0.55%	CLINIC BLDG FL. 7
OPD	399	0.39%	CLINIC BLDG FL. G
Internal Medicine Administration	440	0.43%	CLINIC BLDG FL. 6
Anaesthesia Administration	587	0.58%	CLINIC BLDG FL. 7
Paediatrics Administration	573	0.56%	CLINIC BLDG FL. 6
Subtotal	15,030	14.75%	
DENTAL CLINIC SERVICES			
Dental Clinic	2,260	2.22%	DENTAL BLDG FL. G, 1
Subtotal	2,260	2.22%	
DEPARTMENTAL DGSM 101,870 100.00%			
<i>Building Grossing Factor</i>			
Interdepartmental Circulation	15,281	15%	
Mech/Elect/Telecom	11,715	10%	
Envelope	5,155	4%	
BGSM	134,020	1.32	
BGSM/Bed Ratio	220		

New Zayed Military Hospital
Abu Dhabi, UAE

CATHRYN BANG + PARTNERS
Architecture Planning Interiors

SUMMARY ANALYSIS_BY BUILDING

600 bed Trauma Center

PROJECTED PROGRAM

September 17, 2007

SERVICE	SOA Prog (DGSM)	% of Total	Stacking Plan Proposed Location (Bldg/Floor)	
INPATIENT BUILDING				
Food Services - Dietetics	657	0.64%	IP BLDG	FL. B1
Food Services - Kitchen & Catering	2,124	2.09%	IP BLDG	FL. B1
ECT	137	0.13%	IP BLDG	FL. G
IP Psychiatry - Male	1,611	1.58%	IP BLDG	FL. G
IP Psychiatry - Female	1,611	1.58%	IP BLDG	FL. G
IP Critical Care	8,053	7.91%	IP BLDG	FL. 1, 2
IP Burn Centre	710	0.70%	IP BLDG	FL. 3
IP Adult Care	30,751	30.19%	IP BLDG	FL. 3, 4, 5, 6, 7, 8, 9
IP OB/GYN Care	532	0.52%	IP BLDG	FL. 10
IP Paediatric Care	3,694	3.63%	IP BLDG	FL. 10
IP VIP Suite	2,108	2.07%	IP BLDG	FL. 11
Subtotal	51,988	51.03%		
DIAGNOSTIC & TREATMENT BUILDING				
Materials Management	2,654	2.61%	D & T BLDG	FL. B1
Central Sterile Supply & Distribution	809	0.79%	D & T BLDG	FL. B1
Laundry	39	0.04%	D & T BLDG	FL. B1
Housekeeping	744	0.73%	D & T BLDG	FL. B1
Patient Escort	202	0.20%	D & T BLDG	FL. B1
Pharmacy	885	0.87%	D & T BLDG	FL. B1
Morgue	63	0.06%	D & T BLDG	FL. B1
Bioengineering	187	0.18%	D & T BLDG	FL. B1
Safety & Maintenance	901	0.88%	D & T BLDG	FL. B1, G
Information Technology	740	0.73%	D & T BLDG	FL. B1
Medical Records	2,924	2.87%	D & T BLDG	FL. 3
Dialysis	372	0.37%	D & T BLDG	FL. G
Nephrology Clinic	239	0.23%	D & T BLDG	FL. G
Accident & Emergency Dept	2,273	2.23%	D & T BLDG	FL. G
Physical Medicine & Rehab	2,375	2.33%	D & T BLDG	FL. G
OP Psychiatry	358	0.35%	D & T BLDG	FL. G
Gift Shop	162	0.16%	D & T BLDG	FL. G
Social Work	153	0.15%	D & T BLDG	FL. G
Finance and Admitting	452	0.44%	D & T BLDG	FL. G, 4
Religious Care	280	0.27%	D & T BLDG	FL. G
Radiology	2,750	2.70%	D & T BLDG	FL. 1
Endoscopy	592	0.58%	D & T BLDG	FL. 1
Non-Invasive Cardiology	415	0.41%	D & T BLDG	FL. 1
Invasive Cardiology	507	0.50%	D & T BLDG	FL. 1
Neurological Testing	242	0.24%	D & T BLDG	FL. 1
Respiratory Therapy	230	0.23%	D & T BLDG	FL. 1
Operating Theatre	4,854	4.76%	D & T BLDG	FL. 2
Anaesthesia - PMC	378	0.37%	D & T BLDG	FL. 2
Laboratory and Blood Bank	799	0.78%	D & T BLDG	FL. 2
Executive Admin/Patient Relations	533	0.52%	D & T BLDG	FL. 4
Nursing Administration	747	0.73%	D & T BLDG	FL. 4
Quality/Risk Mgmt/UR	290	0.28%	D & T BLDG	FL. 4
Subtotal	29,149	28.61%		

New Zayed Military Hospital
Abu Dhabi, UAE

CATHRYN BANG + PARTNERS
Architecture Planning Interiors

SUMMARY ANALYSIS_BY BUILDING

600 bed Trauma Center

PROJECTED PROGRAM

September 17, 2007

SERVICE	SOA Prog (DGSM)	% of Total	Stacking Plan Proposed Location (Bldg/Floor)
RETAIL/AMENITIES BUILDING			
Food Services - Kitchen & Catering	400	0.39%	RETAIL BLDG FL. G
Retails and Amenities for Rental	1,184	1.16%	RETAIL BLDG FL. G, 1
Education and Training	2,498	2.45%	RETAIL BLDG FL. 2, 3, 4
Subtotal	4,082	4.01%	
CLINIC BUILDING			
OP Pharmacy	330	0.32%	CLINIC BLDG FL. G
VIP Clinic	427	0.42%	CLINIC BLDG FL. G
OPD	399	0.39%	CLINIC BLDG FL. G
Ophthalmology Clinic	604	0.59%	CLINIC BLDG FL. 1
ENT Clinic	902	0.89%	CLINIC BLDG FL. 1
ZMH Outpatient Multispeciality Clinic	7,713	7.57%	CLINIC BLDG FL. 2, 3, 4, 5
Neurology Administration	217	0.21%	CLINIC BLDG FL. 6
Urology Administration	196	0.19%	CLINIC BLDG FL. 6
OB/GYN Administration	217	0.21%	CLINIC BLDG FL. 6
Cardiology Administration	244	0.24%	CLINIC BLDG FL. 6
Dermatology Administration	217	0.21%	CLINIC BLDG FL. 6
Internal Medicine Administration	440	0.43%	CLINIC BLDG FL. 6
Paediatrics Administration	573	0.56%	CLINIC BLDG FL. 6
Orthopaedics Administration	498	0.49%	CLINIC BLDG FL. 7
Plastic Surgery Administration	164	0.16%	CLINIC BLDG FL. 7
Oncology Administration	100	0.10%	CLINIC BLDG FL. 7
Surgery Administration	563	0.55%	CLINIC BLDG FL. 7
Anaesthesia Administration	587	0.58%	CLINIC BLDG FL. 7
Subtotal	14,391	14.13%	
DENTAL BUILDING			
Dental Clinic	2,260	2.22%	DENTAL BLDG FL. G, 1
Subtotal	2,260	2.22%	
DEPARTMENTAL DGSM 101,870 100.00%			
<i>Building Grossing Factor</i>			
Interdepartmental Circulation	15,281	15%	
Mech/Elect/Telecom	11,715	10%	
Envelope	5,155	4%	
BGSM	134,020	1.32	
BGSM/Bed Ratio	220		

New Zayed Military Hospital
Abu Dhabi, UAE

CATHRYN BANG + PARTNERS
Architecture Planning Interiors

INPATIENT SERVICES

DETAILED SOA

600 bed Trauma Center

September 17, 2007

ROOM / SPACE	QTY	NSM	TOTAL	COMMENTS
Adult Acute Care				
Patient Area				32 Bed Unit
Isolation Room	4	20	78	
Isolation Anteroom	4	4	15	
Toilet/Shower	4	5	19	
One-bed Room	24	20	468	incl. Family space
Toilet/Shower	12	5	56	
Toilet/Shower	12	7	78	Handicapped
VIP One-bed Room	4	39	156	
Toilet/Shower	4	7	26	
Family Support Room	4	11	45	
Family Clean up Area	1	9	9	
Public Toilet	2	5	9	
Family Consultation Room	1	11	11	
Communication Center and Support Area				
Communication Center	2	13	26	
Decentralized Charting Station	14	3	39	between Patient rooms
Pneumataic Tube/Distribution	2	3	6	
Care Team Work/Reporting Workroom	1	22	22	
Emergency Cart Park	2	2	4	
Point of Care Testing Area	1	6	6	
Nourishment Area	1	7	7	
Medication Room	2	7	15	
Clean Utility Room	2	11	22	
Linen Storage	2	7	15	
Soiled Utility Room	2	7	15	
Equipment Storage	2	17	33	
Portable X-ray Park	1	4	4	
Stretcher/Wheelchair Storage	1	7	7	
Respiratory Therapy Storage/Workroom	1	9	9	
Conference Room/Education	1	22	22	
Hotelling Office - Ancillary Provider Work	1	11	11	
Office - Unit Director	1	11	11	
Office - Clinical Nurse Specialist	1	11	11	
Janitor Closet	1	4	4	
Staff Facilities				
Staff Lounge	1	17	17	
Staff Lockers/Mail Boxes	2	11	22	
Staff Toilet/Shower	2	7	13	
NET SQUARE METER			1,313	
GROSS SQUARE METER Conv Factor	1.50		1,969	
		x	13 = 25,598	
			Units	

New Zayed Military Hospital
Abu Dhabi, UAE

CATHRYN BANG + PARTNERS
Architecture Planning Interiors

INPATIENT SERVICES

DETAILED SOA

600 bed Trauma Center

September 17, 2007

ROOM / SPACE	QTY	NSM	TOTAL	COMMENTS
Adult Acute Care Floor Support				
SHARED BETWEEN UNITS ON A FLOOR				
Public Area				
Prayer Room	2	22	45	
Ablution Room	2	11	22	
Family Waiting/Volunteer Station	2	22	45	
Family Consultation Room	1	11	11	
Public Telephone	4	1	4	
Public Toilet	2	11	22	
Health Education/Resource Center	1	17	17	
Family Sleep Room	2	11	22	
Toilet/Shower	2	7	13	
Special Procedure Area				
Special Procedure Room	1	30	30	
Prep/Holding Area	1	15	15	
Storage	1	7	7	
Clean Supply/Utility Room	1	7	7	
Soiled Utility Room	1	6	6	
Portable X-ray Park	1	6	6	
Nutrition Staging Area				
Dietary Staff Work Area	1	11	11	
Beverage Area	1	7	7	
Refrigerator/Freezer	1	4	4	
Dry Storage	1	6	6	
Workspace	1	7	7	
Support Area				
Assist. Bath Tub Room	1	11	11	
Dialysis Equipment Storage/Prep	1	11	11	
Portable Cardiologic Equipment	1	6	6	
Equipment Storage	1	17	17	
Decentralized Distribution/Staging Area	2	11	22	
Central Soiled Linen/Trash Holding	1	11	11	
Janitor Closet	1	4	4	
Administration Area				
Conference/Education	1	39	39	
Medical Director	1	15	15	
Office - Clinical Nurse Manager	1	11	11	
Office - Admitting	1	11	11	
Office - Social Worker/Discharge Planner	1	11	11	
Workstation - Asst Clinical Nurse Manager	1	6	6	
Workstation - Administrative Assistant	1	6	6	
Files	1	4	4	

New Zayed Military Hospital
Abu Dhabi, UAE

CATHRYN BANG + PARTNERS
Architecture Planning Interiors

INPATIENT SERVICES

DETAILED SOA

600 bed Trauma Center

September 17, 2007

ROOM / SPACE	QTY	NSM	TOTAL	COMMENTS
NET SQUARE METER			491	
GROSS SQUARE METER Conv Factor	1.50		736	
		x	7 = 5,152	
			Floors	
ADULT ACUTE CARE TOTAL			30,751	
		PWC	31,200	

New Zayed Military Hospital
Abu Dhabi, UAE

CATHRYN BANG + PARTNERS
Architecture Planning Interiors

INPATIENT SERVICES

DETAILED SOA

600 bed Trauma Center

September 17, 2007

ROOM / SPACE	QTY	NSM	TOTAL	COMMENTS
Intensive Care				
Patient Area				12 Bed Unit
Isolation Room	3	25	74	
Isolation Anteroom	3	4	11	
Patient Room	7	25	172	incl Family space
VIP Patient Room	2	39	78	
Toilet/Shower	2	7	13	
Family Support Room	2	11	23	
Family Clean up Area	1	1	1	
Public Toilet	2	5	9	
Family Consultation Room	1	11	11	
Communication Center & Support Area				
Communication Center/Charting	1	22	22	
Pneumatic Tube/Distribution	1	3	3	
Decentralized Nurses Station	6	3	17	
Care Team Work/Reporting Workroom	1	22	22	
Emergency Cart Park	1	2	2	
Point of Care Testing Area	1	6	6	
Nourishment Area	1	7	7	
Medication Room	1	11	11	
Clean Supply Room	1	11	11	
Linen Storage	1	7	7	
Soiled Utility Room	1	7	7	
Equipment Storage	1	17	17	
Portable X-ray Park	1	4	4	
Stretcher/Wheelchair Storage	1	6	6	
Respiratory Therapy Storage/Workroom	1	9	9	
Conference/Education	1	22	22	
Hotelling Office - Ancillary Provider Work	1	11	11	
Office - Unit Director	1	11	11	
Office - Clinical Nurse Specialist	1	11	11	
Janitor Closet	1	4	4	
Staff Facilities				
Staff Lounge	1	17	17	
Staff Lockers/Mail Boxes	1	11	11	
Staff Toilet/Shower	2	7	13	
NET SQUARE METER			644	
GROSS SQUARE METER Conv Factor	1.50		966	
			x 7 = 6,765	
			Units	

New Zayed Military Hospital
Abu Dhabi, UAE

CATHRYN BANG + PARTNERS
Architecture Planning Interiors

INPATIENT SERVICES

DETAILED SOA

600 bed Trauma Center

September 17, 2007

ROOM / SPACE	QTY	NSM	TOTAL	COMMENTS
Intensive Care Floor Support				
SHARED BETWEEN UNITS ON A FLOOR				
Public Area				
Prayer Room	2	22	45	
Ablution Room	2	11	22	
Family Waiting/Volunteer Station	2	22	45	
Family Consultation Room	1	11	11	
Public Telephone	4	1	4	
Public Toilet	2	11	22	
Health Education/Resource Center	1	17	17	
Family Sleep Room	2	9	19	
Toilet/Shower	2	7	13	
Special Procedure Area				
Special Procedure Room	1	30	30	
Prep/Holding Area	1	15	15	
Storage	1	7	7	
Clean Supply/Utility Room	1	7	7	
Soiled Utility Room	1	6	6	
Portable X-ray Park	1	6	6	
Support Area				
Dialysis Equipment Storage/Prep	1	11	11	
Portable Cardiodiagnostic Equipment	1	6	6	
Equipment Storage	1	17	17	
Decentralized Distribution/Staging Area	1	11	11	
Central Soiled Linen/Trash Holding	1	11	11	
Janitor Closet	1	4	4	
Administration Area				
Conference/Education	1	39	39	
Medical Director	1	15	15	
Office - Clinical Nurse Manager	1	11	11	
Office - Admitting	1	11	11	
Office - Social Worker/Discharge Planner	1	11	11	
Workstation - Asst Clinical Nurse Manager	1	6	6	
Workstation - Administrative Assistant	1	6	6	
Files	1	4	4	
NET SQUARE METER			429	
GROSS SQUARE METER Conv Factor	1.50		644	
			x 2 = 1,288	
			Floor	
INTENSIVE CARE TOTAL			8,053	
	PWC		8,400	

OB/GYN Acute Care

New Zayed Military Hospital
Abu Dhabi, UAE

CATHRYN BANG + PARTNERS
Architecture Planning Interiors

INPATIENT SERVICES

DETAILED SOA

600 bed Trauma Center

September 17, 2007

ROOM / SPACE	QTY	NSM	TOTAL	COMMENTS
Patient Area				8 Bed Unit
Isolation Room	2	20	39	
Isolation Anteroom	2	4	7	
Toilet/Shower	2	5	9	
One-bed Room	4	20	78	
Toilet/Shower	2	5	9	
Toilet/Shower	2	7	13	Handicapped
VIP One-bed Room	2	39	78	
Toilet/Shower	2	7	13	
Family Support Room	2	11	22	
Procedure Room	1	30	30	
Family Clean up Area	1	9	9	
Public Toilet	1	5	5	
Family Consultation Room	1	11	11	
Communication Center & Support Area				
Communication Center/Charting	1	13	13	
Decentralized Charting Station	3	3	8	
Pneumatic Tube/Distribution	1	3	3	
Care Team Work/Reporting Workroom	1	14	14	
Emergency Cart Park	1	2	2	
Point of Care Testing Area	1	4	4	
Nourishment Area	1	6	6	
Medication Room	1	7	7	
Clean Supply Room/Linen Storage	1	9	9	
Soiled Utility Room	1	7	7	
Equipment Storage	1	0	0	
Respiratory Therapy Storage	1	4	4	
Portable X-ray Park	1	4	4	
Stretcher/Wheelchair Storage	1	4	4	
Hotelling Office - Ancillary Provider Work	1	11	11	
Office - Unit Director	1	11	11	
Office - Clinical Nurse Specialist	1	11	11	
Janitor Closet	1	4	4	
Staff Facilities				
Staff Lounge/Lockers	1	11	11	
Staff Toilet	1	5	5	
NET SQUARE METER			355	
GROSS SQUARE METER Conv Factor	1.50		532	
			x 1 = 532	
			Units	
OB/GYN ACUTE TOTAL			532	
	PWC		530	

New Zayed Military Hospital
Abu Dhabi, UAE

CATHRYN BANG + PARTNERS
Architecture Planning Interiors

INPATIENT SERVICES

DETAILED SOA

600 bed Trauma Center

September 17, 2007

ROOM / SPACE	QTY	NSM	TOTAL	COMMENTS
Pediatric Acute Care				
Patient Area				24 Bed Unit
Isolation Room	6	20	117	
Isolation Anteroom	6	4	22	
Toilet/Shower	6	5	28	
One-bed Room	16	20	312	incl. Family space
Toilet/Shower	8	5	37	
Toilet/Shower	8	7	52	Handicapped
VIP One-bed Room	2	39	78	
Toilet/Shower	2	7	13	
Family Support Room	2	11	23	
Play Room/Toy Storage	1	22	22	
Family Clean up Area	1	9	9	
Public Toilet	2	5	9	
Family Consultation Room	1	11	11	
Communication Center and Support Area				
Communication Center	1	22	22	
Decentralized Charting Station	9	3	25	
Pneumataic Tube/Distribution	1	3	3	
Care Team Work/Reporting Workroom	1	22	22	
Emergency Cart Park	1	2	2	
Point of Care Testing Area	1	6	6	
Nourishment Area	1	7	7	
Medication Room	1	7	7	
Clean Utility Room	1	11	11	
Linen Storage	1	7	7	
Soiled Utility Room	1	7	7	
Equipment Storage	1	17	17	
Portable X-ray Park	1	4	4	
Stretcher/Wheelchair Storage	1	7	7	
Respiratory Therapy Storage/Workroom	1	9	9	
Conference Room/Education	1	22	22	
Hotelling Office - Ancillary Provider Work	1	11	11	
Office - Unit Director	1	11	11	
Office - Clinical Nurse Specialist	1	11	11	
Janitor Closet	1	4	4	
Staff Facilities				
Staff Lounge	1	17	17	
Staff Lockers/Mail Boxes	1	11	11	
Staff Toilet/Shower	2	7	13	
NET SQUARE METER			993	
GROSS SQUARE METER Conv Factor	1.50		1,489	
			x 2 = 2,978	
			Units	

New Zayed Military Hospital
Abu Dhabi, UAE

CATHRYN BANG + PARTNERS
Architecture Planning Interiors

INPATIENT SERVICES

DETAILED SOA

600 bed Trauma Center

September 17, 2007

ROOM / SPACE	QTY	NSM	TOTAL	COMMENTS
Pediatric Acute Care Floor Support				
SHARED BETWEEN UNITS ON THE FLOOR				
Public Area				
Prayer Room	2	17	33	
Ablution Room	2	7	15	
Family Waiting/Volunteer Station	2	17	33	
Consultation Room	1	11	11	
Public Telephone	3	1	3	
Public Toilet	2	11	22	
Health Education/Resource Center	1	17	17	
Family Sleep Room	1	9	9	
Toilet/Shower	1	7	7	
Sibling's Play Room	1	11	11	
Special Procedure Area				
Special Procedure Room	1	30	30	
Prep/Holding Area	1	15	15	
Storage	1	6	6	
Soiled Utility Room	1	6	6	
Clean Supply/Utility Room	1	7	7	
Portable X-ray Park	1	6	6	
Nutrition Staging Area				
Dietary Staff Work Area	1	11	11	
Beverage Area	1	7	7	
Refrigerator/Freezer	1	4	4	
Dry Storage	1	6	6	
Workspace	1	7	7	
Child Life/Child Development Service				
Play Therapy Room	1	22	22	
Toys Storage	1	7	7	
Support Area				
Assist Bathtub Room	1	11	11	
Dialysis Equipment Storage/Prep	1	9	9	
Portable Cardiognostic Equipment	1	6	6	
Equipment Storage	1	11	11	
Decentralized Distribution/Staging Area	1	9	9	
Central Soiled Linen/Trash Holding	1	9	9	
Janitor Closet	1	4	4	

New Zayed Military Hospital
Abu Dhabi, UAE

CATHRYN BANG + PARTNERS
Architecture Planning Interiors

INPATIENT SERVICES

DETAILED SOA

600 bed Trauma Center

September 17, 2007

ROOM / SPACE	QTY	NSM	TOTAL	COMMENTS
Administration Area				
Conference/Education	1	39	39	
Office - Medical Director	1	17	17	
Office - Clinical Nurse Manager	1	11	11	
Office - Social Worker/Discharge Planner	1	11	11	
Office - Admitting	1	11	11	
Workstation - Asst Clinical Nurse Manager	1	6	6	
Workstation - Administrative Assistant	1	6	6	
Files	1	4	4	
Staff Facilities				
On-Call Room	1	11	11	
Toilet/Shower	1	7	7	
NET SQUARE METER			477	
GROSS SQUARE METER Conv Factor	1.50		715	
			x 1 = 715	
			Floor	
PEDIATRIC ACUTE CARE TOTAL			3,694	
		PWC	3,200	

New Zayed Military Hospital
Abu Dhabi, UAE

CATHRYN BANG + PARTNERS
Architecture Planning Interiors

INPATIENT SERVICES

DETAILED SOA

600 bed Trauma Center

September 17, 2007

ROOM / SPACE	QTY	NSM	TOTAL	COMMENTS
Burn Center				
Patient Area				8 Bed Unit
Intensive Care:				
Patient Room	4	25	99	
Acute Care:				
One-bed Room	4	20	78	
Toilet/Shower	2	5	9	
Toilet/Shower	2	7	13	Handicapped
Burn Therapy Room	2	15	30	
Family Clean up Area	1	9	9	
Public Toilet	2	5	9	
Family Consultation Room	2	11	22	
Communication Center & Support Area				
Communication Center/Charting	1	22	22	
Decentralized Charting Station	4	3	11	
Pneumatic Tube/Distribution	1	3	3	
Care Team Work/Reporting Workroom	1	17	17	
Emergency Cart Park	1	2	2	
Point of Care Testing Area	1	6	6	
Nourishment Area	1	7	7	
Medication Room	1	7	7	
Clean Supply Room	1	11	11	
Linen Storage	1	7	7	
Soiled Utility Room	1	7	7	
Equipment Storage	1	15	15	
Respiratory Therapy Storage	1	9	9	
Portable X-ray Park	1	6	6	
Stretcher/Wheelchair Storage	1	7	7	
Hotelling Office - Ancillary Provider Work	1	11	11	
Office - Unit Director	1	11	11	
Office - Clinical Nurse Specialist	1	11	11	
Janitor Closet	1	4	4	
Staff Facilities				
Staff Lounge	1	11	11	
Staff Lockers/Mail Boxes	1	7	7	
Staff Toilet	2	5	9	
NET SQUARE METER			473	
GROSS SQUARE METER Conv Factor	1.50		710	
			x 1 = 710	
			Unit	
BURN CENTER TOTAL			710	
	PWC		650	

New Zayed Military Hospital
Abu Dhabi, UAE

CATHRYN BANG + PARTNERS
Architecture Planning Interiors

INPATIENT SERVICES

DETAILED SOA

600 bed Trauma Center

September 17, 2007

ROOM / SPACE	QTY	NSM	TOTAL	COMMENTS
Inpatient Psych Unit - Male				
Patient Area				20 Bed Unit
One-bed Room	20	20	390	
Toilet/Shower	10	5	46	
Toilet/Shower	10	7	65	Handicapped
Seclusion Room	2	11	22	
Vestibule	1	4	4	
Toilet/Shower	1	7	7	
Dining/ Activity	1	37	37	
Kitchen	1	11	11	
Quiet Activity Room	1	17	17	
Group Therapy Room	1	17	17	
Examination Room	1	15	15	for Physical Exam
Interviewing and Observation Room	1	15	15	
Wheelchair Shower/Assist Tub Room	1	11	11	
Patient Toilet	2	5	9	
Public Telephone	2	1	2	
Public Toilet	2	5	9	
Communication Center and Support Area				
Communication Center	1	22	22	
Pneumataic Tube/Distribution	1	3	3	
Care Team Work/Reporting Workroom	1	22	22	
Emergency Cart Park	1	2	2	
Nourishment Area	1	7	7	
Medication Room	1	7	7	
Clean Supply	1	11	11	
Linen Storage	1	7	7	
Soiled Utility Room	1	7	7	
Equipment Storage	2	17	33	
Stretcher/Wheelchair Storage	1	7	7	
Conference Room/Education	1	22	22	
Hotelling Office - Ancillary Provider Work	1	11	11	
Office - Unit Director	1	11	11	
Office - Clinical Nurse Specialist	1	11	11	
Janitor Closet	1	4	4	
Staff Facilities				
Staff Lounge	1	17	17	
Staff Lockers/Mail Boxes	1	11	11	
Staff Toilet/Shower	2	7	13	
NET SQUARE METER			909	
GROSS SQUARE METER Conv Factor	1.50		1,363	
			x 1 = 1,363	
			Unit	

Inpatient Psych Unit - Female

New Zayed Military Hospital
Abu Dhabi, UAE

CATHRYN BANG + PARTNERS
Architecture Planning Interiors

INPATIENT SERVICES

DETAILED SOA

600 bed Trauma Center

September 17, 2007

ROOM / SPACE	QTY	NSM	TOTAL	COMMENTS
Patient Area				20 Bed Unit
One-bed Room	20	20	390	
Toilet/Shower	10	5	46	
Toilet/Shower	10	7	65	Handicapped
Seclusion Room	2	11	22	
Vestibule	1	4	4	
Toilet/Shower	1	7	7	
Dining/ Activity	1	37	37	
Kitchen	1	11	11	
Quiet Activity Room	1	17	17	
Group Therapy Room	1	17	17	
Examination Room	1	15	15	for Physical Exam
Interviewing and Observation Room	1	15	15	
Wheelchair Shower/Assist Tub Room	1	11	11	
Patient Toilet	2	5	9	
Public Telephone	2	1	2	
Public Toilet	2	5	9	
Communication Center and Support Area				
Communication Center	1	22	22	
Pneumataic Tube/Distribution	1	3	3	
Care Team Work/Reporting Workroom	1	22	22	
Emergency Cart Park	1	2	2	
Nourishment Area	1	7	7	
Medication Room	1	7	7	
Clean Supply	1	11	11	
Linen Storage	1	7	7	
Soiled Utility Room	1	7	7	
Equipment Storage	2	17	33	
Stretcher/Wheelchair Storage	1	7	7	
Conference Room/Education	1	22	22	
Hotelling Office - Ancillary Provider Work	1	11	11	
Office - Unit Director	1	11	11	
Office - Clinical Nurse Specialist	1	11	11	
Janitor Closet	1	4	4	
Staff Facilities				
Staff Lounge	1	17	17	
Staff Lockers/Mail Boxes	1	11	11	
Staff Toilet/Shower	2	7	13	
NET SQUARE METER			909	
GROSS SQUARE METER Conv Factor	1.50		1,363	
			x 1 = 1,363	
			Unit	

New Zayed Military Hospital
Abu Dhabi, UAE

CATHRYN BANG + PARTNERS
Architecture Planning Interiors

INPATIENT SERVICES

DETAILED SOA

600 bed Trauma Center

September 17, 2007

ROOM / SPACE	QTY	NSM	TOTAL	COMMENTS
Inpatient Psych Unit Floor Support				
SHARED BETWEEN UNITS ON THE FLOOR				
Public Area				
Prayer Room	2	22	45	Also for Staff Use
Ablution Room	2	11	22	Also for Staff Use
Family Waiting/Volunteer Station	2	11	22	
Consultation Room	2	11	22	
Public Telephone	2	1	2	
Public Toilet	2	5	9	
Health Education/Resource Center	1	11	11	
Special Activities Area				
Outdoor Area	1			Therapeutic Garden
Exercise Room	1	22	22	
ADL Kitchen	1	9	9	
ADL Toilet/Bath	1	7	7	
Patient Laundry	1	9	9	
Multipurpose Room	1	22	22	
Office - OT	1	11	11	
Equipment/Furniture Storage	1	11	11	
Secured Storage	1	7	7	
Support Area				
Equipment Storage	1	17	17	
Decentralized Distribution/Staging Area	1	11	11	
Central Soiled Linen/Trash Holding	1	17	17	
Janitor Closet	1	4	4	
Administration/Teaching Area				
Office - Medical Director	1	11	11	
Office - Clinical Nurse Manager	1	11	11	
Office - Social Worker/Discharge Planner	1	11	11	
Workstation - Asst Clinical Nurse Manager	1	6	6	
Workstation - Administrative Assistant	1	6	6	
Files	1	4	4	
NET SQUARE FEET (NSF)			331	
GROSS SQUARE FEET (GSF) Conv Factor	1.50		496	
			x 1 = 496	
			Floor	
PSYCHIATRIC CARE TOTAL			3,223	
	PWC		3,000	

New Zayed Military Hospital
Abu Dhabi, UAE

CATHRYN BANG + PARTNERS
Architecture Planning Interiors

INPATIENT SERVICES

DETAILED SOA

600 bed Trauma Center

September 17, 2007

ROOM / SPACE	QTY	NSM	TOTAL	COMMENTS
VIP Suite				
Patient Area				10 Bed Unit
ROYAL SUITES				
Concierge/Security Station	1	7	7	
Royal Suites	2	65	130	Negative pressure isolation capable.
Toilet/Shower	2	9	19	
Family Support Room	2	19	37	
Toilet/Shower	2	7	15	
Kitchenette	2	7	15	
Prayer Room	2	11	22	
Consultation Room	2	11	22	
VVIP				
VVIP One-bed Room	8	46	372	Negative pressure isolation capable.
Toilet/Shower	8	7	59	
Family Support Room	8	15	120	
Toilet/Shower	8	7	52	
Kitchenette	8	7	52	
Family Clean up Area	1	7	7	
Public Toilet	2	7	13	
Family Consultation Room	1	15	15	
Secured Storage	1	9	9	
Prayer Room	2	22	45	Staff use also.
Ablution Room	2	11	22	
Special Procedure Area				
Special Procedure Room	1	30	30	
Prep/Holding Area	1	15	15	
Storage	1	7	7	
Soiled Utility Room	1	6	6	
Clean Supply/Utility Room	1	7	7	
Portable X-ray Park	1	6	6	
Communication Center and Support Area				
Concierge/Security Station	1	9	9	
Communication Center	1	22	22	
Pneumataic Tube/Distribution	1	3	3	
Care Team Work/Reporting Workroom	1	22	22	
Emergency Cart Park	1	2	2	
Point of Care Testing Area	1	6	6	
Nourishment Area	1	7	7	
Medication Room	1	7	7	
Clean Utility Room	1	11	11	
Linen Storage	1	7	7	
Soiled Utility Room	1	7	7	
Equipment Storage	1	17	17	
Portable X-ray Park	1	4	4	
Stretcher/Wheelchair Storage	1	7	7	
Respiratory Therapy Storage/Workroom	1	9	9	
Conference Room/Education	1	22	22	

New Zayed Military Hospital
Abu Dhabi, UAE

CATHRYN BANG + PARTNERS
Architecture Planning Interiors

INPATIENT SERVICES

DETAILED SOA

600 bed Trauma Center

September 17, 2007

ROOM / SPACE	QTY	NSM	TOTAL	COMMENTS
Hotelling Office - Ancillary Provider Work	1	11	11	
Office - Unit Director	1	11	11	
Office - Clinical Nurse Specialist	1	11	11	
Janitor Closet	1	4	4	
Staff Facilities				
Staff Lounge	1	17	17	
Staff Lockers/Mail Boxes	2	11	22	
Staff Toilet/Shower	2	7	13	
Gourmet Chef Area				
Dietary Staff Work Area	1	22	22	
Beverage Area	1	7	7	
Refrigerator/Freezer	1	4	4	
Dry Storage	1	6	6	
Workspace	1	7	7	
NET SQUARE METER			1,406	
GROSS SQUARE METER Conv Factor	1.50		2,108	
			x 1 = 2,108	
			Unit	
VIP SUITE TOTAL			2,108	
	PWC		2,000	
INPATIENT SERVICES TOTAL (DGSM)			49,070	
		PWC TOTAL	48,980	

New Zayed Military Hospital
Abu Dhabi, UAE

CATHRYN BANG + PARTNERS
Architecture Planning Interiors

DIAGNOSTIC & TREATMENT SERVICES

DETAILED SOA

600 bed Trauma Center

September 17, 2007

ROOM / SPACE	QTY	NSM	TOTAL	COMMENTS
CSSD				Potential for Outsourcing.
Administrative Area				
Office - Assistant Director	1	11	11	
Workstation - CSSD	2	6	11	
Workstation - Administrative Assistant	1	6	6	
Files	1	4	4	
Decontamination Area				
Case Cart Holding Area	1	19	19	
Decontamination Change Area	2	4	7	
Decontamination/Sorting Area	1	46	46	
Gas Sterilizer/Aerator Room	1	28	28	
Automated Cart Wash & Drying	1	19	19	
Equipment Clean-up	1	19	19	
Trash Holding Area	1	7	7	
Staff Locker	2	7	15	
Staff Toilet	1	5	5	
Janitor Closet	1	4	4	
Sterile Processing				
Scrub Issue Area	2	15	30	
Breakout Room	1	15	15	
Clean Change Area	2	4	7	
Instrument Sorting & Pack/Makeup Area	1	74	74	
Terminal Sterilizer & Equip. Room	1	37	37	
Sterile Instrument Storage	1	46	46	
Sterile Linen/Disposable Storage	1	46	46	
Case Cart Holding Area	1	46	46	
Bulk Supply Storage	1	37	37	
Equipment Storage	1	56	56	
Office - Supervisor	1	11	11	
Staff Locker	2	7	15	
Staff Toilet	1	5	5	
Janitor Closet	1	4	4	
Staff Facilities				
Staff Lounge	1	17	17	
NET SQUARE METER			647	
GROSS SQUARE METER Conv Factor	1.25		809	
CSSD TOTAL			809	
	PWC		800	

New Zayed Military Hospital
Abu Dhabi, UAE

CATHRYN BANG + PARTNERS
Architecture Planning Interiors

DIAGNOSTIC & TREATMENT SERVICES

600 bed Trauma Center

DETAILED SOA

September 17, 2007

ROOM / SPACE	QTY	NSM	TOTAL	COMMENTS
Pain Management Center				
Public Area				
Reception	2	6	11	
Waiting	2	9	19	
Public Toilet	2	5	9	
Exam Area				
Evaluation Service Waiting	2	4	7	
Weight & Temp./Testing Room	2	7	15	
Treatment Room	4	10	41	
Acupuncture Room	1	10	10	
Biofeedback Room	1	10	10	
Relaxation Room	1	10	10	
Simulation Room	1	10	10	
Injection Therapy Room	1	10	10	
Patient Toilet	2	5	9	
Consultation Room	4	10	41	
Support Areas				
Office - Supervisor	1	11	11	
Charting Area	1	6	6	
Nurses Station	1	13	13	
Medication Area	1	6	6	
Clean Supply and Linen	1	9	9	
Soiled Holding	1	7	7	
Equipment Storage	1	11	11	
Janitor Closet	1	4	4	
Staff Area				
Staff Lounge/Lockers	1	11	11	
Staff Toilet	2	5	9	
NET SQUARE METER			291	
GROSS SQUARE METER Conv Factor	1.30		378	
PAIN MANAGEMENT CENTER TOTAL			378	
	PWC		360	

New Zayed Military Hospital
Abu Dhabi, UAE

CATHRYN BANG + PARTNERS
Architecture Planning Interiors

DIAGNOSTIC & TREATMENT SERVICES

600 bed Trauma Center

DETAILED SOA

September 17, 2007

ROOM / SPACE	QTY	NSM	TOTAL	COMMENTS
Operating Theatre				
Control Area				
Front Desk/Control Station	1	11	11	
Scheduling Room	2	9	19	
Workstation - Scheduling Supervisor	1	6	6	
Copy/Supply Storage/Files	1	7	7	
Office - Charge Nurse	1	11	11	
Waiting				
Reception	1	11	11	
Prayer Room	2	22	45	
Ablution Room	2	11	22	
VIP Waiting Area	1	28	28	
Toilet	1	7	7	
Consultation Room	1	11	11	
Waiting Area	2	28	56	
Pediatric Play Area	1	7	7	
Public Telephones	4	1	4	
Public Toilets	2	11	22	
Family Consultation Room	2	11	22	
Operating Room Area				
			16 ORs	
Operating Room	10	46	465	Pediatric OR's to be Separated
Operating Room	4	65	260	
Operating Room, MRI Capable	2	65	130	
Anesthesia Storage	16	1	15	
Supply Storage	16	1	15	
Substerile	8	7	59	
Scrub Area	8	4	30	
Stretcher Park	16	2	30	
General Equipment	16	7	119	
Sterile Supply Core	16	7	119	
Housekeeping	2	4	7	
Minor Procedure Area				
Pediatric Induction Room	1	15	15	
Minor Procedure Room	2	17	33	
Patient Toilet	1	5	5	

New Zayed Military Hospital
Abu Dhabi, UAE

CATHRYN BANG + PARTNERS
Architecture Planning Interiors

DIAGNOSTIC & TREATMENT SERVICES

600 bed Trauma Center

DETAILED SOA

September 17, 2007

ROOM / SPACE	QTY	NSM	TOTAL	COMMENTS
Pre-OP				Pediatric Pre-OP needs to be Separated
Patient Dressing/Lockers	2	11	22	
Patient Toilet	2	5	9	
Pre-OP	14	7	104	
Patient Toilet	2	5	9	
Isolation Room	2	11	22	
Isolation Anteroom	2	4	7	
Isolation Toilet	1	5	5	
Nurses' Station	1	13	13	
Pneumatic Tube/Distribution Area	1	2	2	
Emergency Cart Park	1	2	2	
Medication Room	1	7	7	
Linen Storage	1	6	6	
Clean Utility	1	11	11	
Soiled Utility	1	11	11	
Equipment Storage Alcove	2	4	7	
Staff Toilet	1	5	5	
PACU / Stage I Recovery				Pediatric PACU need to be Separated.
Recovery	14	7	104	
Patient Toilet	2	5	9	
Recovery Room, Isolation	2	11	22	
Isolation Ante Room	2	4	7	
Patient Toilet	1	5	5	
Nurses Station	1	13	13	
Pneumatic Tube/Distribution Area	1	2	2	
Emergency Cart Park	1	2	2	
Physician Charting	1	7	7	
Medication Area	1	6	6	
Linen Storage	1	6	6	
Clean Utility	1	11	11	
Soiled Utility	1	11	11	
Equipment Storage	1	17	17	
Anesthesia Supply and Storage	1	7	7	
Housekeeping Closet	1	4	4	
Office - Director, PACU	1	11	11	
Office - Assst Director, PACU	1	9	9	
Workstation - PACU Education Staff	1	6	6	
Conference/Report Room	1	17	17	
Staff Toilet	1	5	5	

New Zayed Military Hospital
Abu Dhabi, UAE

CATHRYN BANG + PARTNERS
Architecture Planning Interiors

DIAGNOSTIC & TREATMENT SERVICES

600 bed Trauma Center

DETAILED SOA

September 17, 2007

ROOM / SPACE	QTY	NSM	TOTAL	COMMENTS
Stage II Recovery				
Recovery	22	6	123	
Patient Toilet	2	5	9	
Recovery Room, Isolation	2	11	22	
Isolation Ante Room	2	4	7	
Patient Toilet	1	5	5	
Nurses Station	1	13	13	
Physician Charting	1	7	7	
Medication Area	1	6	6	
Linen Storage	1	6	6	
Clean Utility	1	11	11	
Soiled Utility	1	11	11	
Equipment Storage Alcove	2	4	7	
Housekeeping Closet	1	4	4	
Staff Toilet	1	5	5	
Anesthesia				
Offices				Programmed in Anesthesia Admin
Anesthesia Ready Room	2	15	30	
Anesthesia Work Room/Storage	2	28	56	
Support Area				
Materials Management Receiving	1	11	11	
Office - Materials Manager	1	7	7	
Workstation - Support Staff	1	6	6	
General Instrument Handling				See CSSD Program
Specialty Processing	1	22	22	
Sterile Supply Storage	1	28	28	
Non-Sterile Supply Storage	1	22	22	
Clean Linen Storage	1	11	11	
Clean Utility	1	17	17	
Soiled Utility	1	17	17	w/ elevator to Decontamination
Trash/Linen Holding	1	11	11	
Portable X-ray Park	2	4	7	C-arms, Fluoro Equipment
Viewing	1	11	11	
Frozen Section Lab	1	11	11	
Office - Senior Supervisor Lab Tech	1	7	7	
Point of Care Testing Area/Supply Storage	1	11	11	
Blood Refrigerator	1	7	7	
Respiratory Therapy Storage	1	22	22	
Peds Echocardiography Storage	1	7	7	
Orthopedics Storage	1	11	11	Locate next to Operating Rooms
Microscope Storage	1	11	11	
Storage for Large Equipment	1	22	22	
Gas Tanks Storage	1	7	7	
Stretcher/Wheelchair Storage	4	2	7	
Housekeeping Closet	1	4	4	

New Zayed Military Hospital
Abu Dhabi, UAE

CATHRYN BANG + PARTNERS
Architecture Planning Interiors

DIAGNOSTIC & TREATMENT SERVICES

600 bed Trauma Center

DETAILED SOA

September 17, 2007

ROOM / SPACE	QTY	NSM	TOTAL	COMMENTS
OR Management and Support Offices				
Office - Director, Operating Room	1	17	17	
Workstation - Administrative Assistant	1	6	6	
Office - Staff	2	11	22	
Workstation - Procedure Coord	4	6	22	
PACS/Pathology Imaging Area	1	11	11	
Workstation - Surgeon	2	6	11	
Conference Room				Utilize room in Anesthesia Admin
Classroom				Utilize room in Anesthesia Admin
Library				Utilize room in Anesthesia Admin
Staff Facilities				
Doctors Lounge	1	33	33	
Lunch Room	1	17	17	
Supplies Storage	1	6	6	
On-Call Room	2	7	15	
Toilet/Shower	2	7	13	
Scrub Issues Room	1	9	9	
Lockers - Male	1	28	28	
Toilet - Male	1	17	17	
Shower - Male	2	3	6	
Lockers - Female	1	28	28	
Toilet - Female	1	17	17	
Shower - Female	2	3	6	
Gown Storage	1	9	9	
Housekeeping Closet	1	4	4	
NET SQUARE METER			3,033	
GROSS SQUARE METER Conv Factor	1.60		4,854	
OPERATING THEATRE TOTAL			4,854	
		PWC	4,580	

New Zayed Military Hospital
Abu Dhabi, UAE

CATHRYN BANG + PARTNERS
Architecture Planning Interiors

DIAGNOSTIC & TREATMENT SERVICES

600 bed Trauma Center

DETAILED SOA

September 17, 2007

ROOM / SPACE	QTY	NSM	TOTAL	COMMENTS
Endoscopy				
Control Area				
Front Desk/Control Station	1	11	11	
Waiting	2	11	22	
Scheduling Room	2	9	19	
Workstation - Scheduling Supervisor	1	6	6	
Copy/Supply Storage/Files	1	7	7	
Office - Charge Nurse	1	11	11	
Consultation Room	1	11	11	
Toilet	2	5	9	
Procedure/Treatment Area				
Nurse Station	2	7	15	
Patient Holding/Recovery, Stretcher	6	6	33	Separate male & female
Procedure Room, GI w/ Fluoroscopy	2	37	74	Laser Ready
Procedure Room, ERCP	1	30	30	Includes control
Procedure Room, Bronchoscopy	1	30	30	Negative Pressure
Procedure Room, Motility, Breath Analysis	1	19	19	
Anteroom/Staff Workroom/Viewing	1	11	11	Between Bronch & GI proced rms
Patient Toilet	1	5	5	
Support Area				
Clean Utility	1	11	11	
Linen Storage	1	3	3	
Soiled Utility/Equipment Cleaning	1	11	11	
Equipment Storage	1	11	11	Portable carts
Scope Cleaning Room	1	7	7	Vented for fume extraction
Scope Storage Room	1	7	7	
Housekeeping Closet	1	4	4	
Administration Area				
Physician Workroom	1	11	11	
Office - Faculty	1	11	11	
Staff Facilities				
Staff Lounge/Lockers/Conference				Share w/ adjacent service
Staff Toilet	1	5	5	Handicapped
NET SQUARE METER			395	
GROSS SQUARE METER Conv Factor	1.50		592	
ENDOSCOPY TOTAL			592	
	PWC		540	

New Zayed Military Hospital
Abu Dhabi, UAE

CATHRYN BANG + PARTNERS
Architecture Planning Interiors

DIAGNOSTIC & TREATMENT SERVICES

DETAILED SOA

600 bed Trauma Center

September 17, 2007

ROOM / SPACE	QTY	NSM	TOTAL	COMMENTS
Accident & Emergency Department				
Patient Entrance/Triage/Waiting Area				
Entry Vestibule	1	11	11	
Main Waiting	2	37	74	
Pediatric Play Area	1	11	11	Semi-private
Telephone	4	1	4	
Drinking Fountain	2	1	2	
Public Toilet	2	11	22	
Vending	1	6	6	
Exterior Area			0	
Security Station	1	11	11	w/ friendly appearance
Triage Reception/Workstation	1	7	7	
Triage Examination	2	7	15	
Family Counseling/Grieving Room	1	11	11	
Interview Room	1	11	11	
Stretcher/Wheelchair Storage	1	7	7	
Admitting/Registration Station	2	6	11	
Office - Psych/Social Work	1	7	7	
Paramedic Radiocommunications Room	1	7	7	
Decontamination Shower	1	7	7	w/ separate water collection system & direct exterior access
Fast Track Area (Urgent Care)				
				7 Bed Unit
Patient Sub-Waiting	1	17	17	Separate from main waiting
Nurses Station/Charting	1	9	9	
Medication Area	1	6	6	
Physician Workroom/Dictation	1	6	6	
Exam/Treatment	6	9	56	
Forensic Examination Room	1	11	11	
Patient Toilet	1	5	5	
Clean Utility	1	7	7	
Linen Storage	1	6	6	
Soiled Utility	1	7	7	
Equipment Storage	1	7	7	
Housekeeping Closet	1	4	4	
Emergency Care Area				
				20 Bed Unit
Trauma/Cardiac Resuscitation	3	30	89	incl. mobile Radiography Unit
Acute Exam/Treatment	6	9	56	
Acute Exam/Treatment - Isolation	4	9	37	
Isolation Anteroom	2	4	7	
Head & Neck Exam/Treatment	1	9	9	incl ENT equipment
OB/Gyn Exam/Treatment	2	13	26	Private
OB/Gyn Patient Toilet	1	5	5	

New Zayed Military Hospital
Abu Dhabi, UAE

CATHRYN BANG + PARTNERS
Architecture Planning Interiors

DIAGNOSTIC & TREATMENT SERVICES

600 bed Trauma Center

DETAILED SOA

September 17, 2007

ROOM / SPACE	QTY	NSM	TOTAL	COMMENTS
Orthopaedic Exam/Treatment	2	9	19	
Ortho Equipment/Supply Room	1	5	5	
Pediatric Exam/Treatment	1	9	9	
Psych/Secured Exam/Treatment	1	9	9	w/ security & safety provisions
Psych/Secured Patient Toilet	1	5	5	
Procedure Room	1	30	30	
Patient Toilet	4	5	19	
Nurses Station	2	13	26	
Pneumatic Tube/Distribution	2	2	4	
Emergency Cart Park	2	2	4	
Communications Area	1	6	6	
Medication Room	2	7	15	
Nourishment Area	1	6	6	
Decentralized Charting	4	2	7	Within patient care area
Physician Workroom/Dictation	1	11	11	
Point of Care Testing Area (Lab)	1	6	6	w/ pneumatic tube to STAT Lab
Clean Utility	1	11	11	
Soiled Utility	1	11	11	
Equipment Storage	1	19	19	
Portable Ultrasound and Cardio Equipment	1	6	6	Accessible to patient areas
Respiratory Therapy Storage/Workroom	1	22	22	
Housekeeping Closet	1	4	4	
Observation Area				10 Bed Unit
Patient Dressing			0	within observation stations
Patient Lockers	1	4	4	
Patient Observation Station	8	7	59	w/ side walls & front curtain
Isolation Room	2	11	22	Locate Central
Isolation Anteroom	1	4	4	Shared between isolation rms
Isolation Toilet	1	5	5	
Patient Toilet	4	5	19	
Nurses' Station	1	15	15	w/ decentralized stns for visibility
Pneumatic Tube/Distribution Area	1	2	2	
Emergency Cart Park	1	2	2	
Medication Room	1	7	7	
Clean Utility	1	11	11	
Linen Storage	1	6	6	
Equipment Storage Alcove	1	4	4	
Nourishment Area	1	6	6	
Physician Dictation	1	11	11	
Soiled Utility	1	7	7	
Special Processing	1	7	7	
Stretcher / Wheelchair Holding	1	7	7	
Equipment Storage Room	1	15	15	
Housekeeping Closet	1	4	4	
Staff Toilet	1	5	5	

New Zayed Military Hospital
Abu Dhabi, UAE

CATHRYN BANG + PARTNERS
Architecture Planning Interiors

DIAGNOSTIC & TREATMENT SERVICES

600 bed Trauma Center

DETAILED SOA

September 17, 2007

ROOM / SPACE	QTY	NSM	TOTAL	COMMENTS
24 Hour Radiology Area				Adjacent to Trauma Area
Sub-Waiting	2	6	11	
Patient Holding (Stretcher)	1	6	6	
Patient Toilet	1	5	5	
Radiographic Room w/Control	1	30	30	
Radiographic/Fluoro Room w/Control	1			
CT Room	1	30	30	
CT Control Room	1	15	15	
CT Computer Room	1	15	15	
Ultrasound Room	1	15	15	
Reading/Dictation	1	11	11	
Office - Radiologist	1	11	11	
Supply Storage	1	7	7	
Administration Area				
Office - Medical Director	1	17	17	
Office - Administrative Director	1	17	17	
Workstation - Administrative Assistant	1	6	6	
Office - Clinical Supervisor	1	22	22	
Office - Staff/Patient Education	1	11	11	
Office - Social Work	1	11	11	
Workstation - Clerical Supervisor	1	6	6	
Office - Prehospital Care Coordinator	1	11	11	
Workstation - Assistant/Computer Input	1	6	6	
Office - Billing	1	17	17	
Office - Finance/HR/Supply	1	11	11	
Files	1	4	4	
Office - Faculty	1	11	11	
Office - Research	1	7	7	
Resident Workroom	1	19	19	
Conference/Classroom	1	42	42	
Staff Facilities				
Resident On-call Room	2	7	15	
Staff Lounge	1	15	15	
Staff Lockers/Mailboxes	1	15	15	
Staff Toilet/Shower/Dressing	2	15	30	
NET SQUARE METER			1,515	
GROSS SQUARE METER Conv Factor	1.50		2,273	
ACCIDENT & EMERGENCY DEPT TOTAL			2,273	
	PWC		2,300	

New Zayed Military Hospital
Abu Dhabi, UAE

CATHRYN BANG + PARTNERS
Architecture Planning Interiors

DIAGNOSTIC & TREATMENT SERVICES

600 bed Trauma Center

DETAILED SOA

September 17, 2007

ROOM / SPACE	QTY	NSM	TOTAL	COMMENTS
Pharmacy				
INPATIENT PHARMACY				
Pharmacy Work Area				
Production/Dispensing	1	46	46	
Drug Pkg./Processed Inventory	1	56	56	
Bulk Drug Storage/Receiving	1	56	56	
Manufacturing/Active Storage	1	37	37	
Sterile Compounding	1	7	7	
Narcotics Storage	1	6	6	
Refrigerator/Freezer	1	19	19	
Unit Dose Filling/Check Storage	1	22	22	
Solution Manufacture/Storage	1	28	28	incl. Washer & Sterilizer Room
IV Fluid Storage	1	28	28	
IV Additive/Editing/Holding/Dispatch	1	37	37	
Investigative Drug Storage	1	19	19	
Information Systems Area	1	11	11	
Cart Park	1	11	11	
Janitor Closet	1	4	4	
Drug Information Area				
Office - Assistant Director	1	11	11	
Work Station - Pharmacist	4	6	22	
Secretary/Files	1	7	7	
Reference Room/Library	1	17	17	
Nutritional Support Service				
Work Station - Pharmacist	2	6	11	
Work Station - Clinical Specialist	2	6	11	
Work Station - Dietitian	1	6	6	
Administration Area				
Office - Director	1	11	11	
Office - Assistant Director	1	11	11	
Office - Administrative Coordinator	1	7	7	
Office - Inventory & Billing	1	28	28	
Work Station - Resident	1	6	6	
Workroom/Storage/Copy Machine	1	17	17	
Staff Facilities Area				
Staff Lounge	1	11	11	
Staff Lockers	1	9	9	
Staff Toilet	2	5	9	

New Zayed Military Hospital
Abu Dhabi, UAE

CATHRYN BANG + PARTNERS
Architecture Planning Interiors

DIAGNOSTIC & TREATMENT SERVICES

600 bed Trauma Center

DETAILED SOA

September 17, 2007

ROOM / SPACE	QTY	NSM	TOTAL	COMMENTS
OUTPATIENT PHARMACY				
Waiting	2	22	45	
File Area	1	7	7	
Sterile/General Compounding	1	11	11	
General Compounding Area	1	11	11	
Consult Area	4	6	22	
Work Area/Dispensing/Service Window	1	28	28	
Refrigerator/Freezer	4	3	11	
Drug Storage	1	37	37	
Chemotherapy:				
Order Review/Editing EDP	1	11	11	
Unit Dose Station	1	11	11	
IV Hood Station/Storage	1	11	11	
Chemotherapy IV Hood Station/Storage	1	11	11	
Refrigerator/Freezer	2	3	6	
Storage	1	22	22	
Cart Park	1	11	11	
Janitor Closet	1	4	4	
Administration Area				
Office - Director	1	11	11	
Office - Assistant Director	1	11	11	
Office - Administrative Coordinator	1	7	7	
Office - Inventory & Billing	1	19	19	
Work Station - Resident	1	6	6	
Workroom/Storage/Copy Machine	1	11	11	
Staff Facilities Area				
Staff Lounge	1	11	11	
Staff Lockers	1	7	7	
Staff Toilet	2	5	9	
NET SQUARE METER			935	
GROSS SQUARE METER Conv Factor			1.30	1,215
PHARMACY TOTAL			1,215	
			PWC	1,180

New Zayed Military Hospital
Abu Dhabi, UAE

CATHRYN BANG + PARTNERS
Architecture Planning Interiors

DIAGNOSTIC & TREATMENT SERVICES

600 bed Trauma Center

DETAILED SOA

September 17, 2007

ROOM / SPACE	QTY	NSM	TOTAL	COMMENTS
Radiology				
Reception/Control Area				
Reception/Control	1	11	11	
Scheduling	2	11	22	
Waiting	2	28	56	
Toilet	2	7	15	
Stretcher/Wheelchair Storage	1	11	11	
Dispatcher Area	1	7	7	
Outpatient Gown and Waiting Areas				
Dressing w/ locker	10	2	19	
Dressing w/ locker	2	4	7	Handicapped
Gowned Waiting	2	11	22	
Patient Toilet	2	5	9	
Inpatient Holding				
Patient Holding (Stretcher)	6	6	33	Central to procedure rooms
Prep & Recovery				
				Central to procedure rooms
Prep Station	5	7	37	
Recovery Station	5	7	37	
Patient Toilet	1	5	5	
Nurses' Station	1	15	15	
Emergency Cart Park	1	2	2	
Medication Room	1	6	6	
Clean Utility	1	7	7	
Linen Storage	1	6	6	
Equipment Storage Alcove	1	4	4	
Soiled Utility	1	7	7	
Staff Toilet	1	5	5	
General Procedures				
				Pediatric Radiology to be Separated.
General Radiography w/Control	5	30	149	incl. minimal storage
Radiography/Fluoroscopy w/Control	6	30	178	incl. minimal storage
Patient Toilet	4	5	19	
Viewing/Reading	1	22	22	
Processing Area	1	11	11	
Tech Work Area	1	11	11	
Supply Storage/Workroom	1	11	11	
Barium Area	1	4	4	

New Zayed Military Hospital
Abu Dhabi, UAE

CATHRYN BANG + PARTNERS
Architecture Planning Interiors

DIAGNOSTIC & TREATMENT SERVICES

600 bed Trauma Center

DETAILED SOA

September 17, 2007

ROOM / SPACE	QTY	NSM	TOTAL	COMMENTS
CT				1 CT to be Interventional Capable.
Procedure Room	2	42	84	w/ minimal storage
Control Room	1	19	19	Shared; 1 per 2 proced rms
Patient Toilet	1	5	5	
Central Work Area	1	7	7	Consoles for scanners & Supplies
Viewing/Reading	1	11	11	
Processing Area	1	7	7	
Tech Work Area	1	7	7	
Supply Storage/Workroom	1	7	7	
Ultrasound				
Ultrasound Room	5	14	70	
Patient Toilet	3	5	14	
Viewing/Reading	1	11	11	
Processing Area	1	7	7	
Tech Work Area	1	11	11	
Supply Storage/Workroom	1	7	7	
MR				
Procedure Room	2	46	93	1 MR to be Interventional Capable.
Control Room	2	9	19	May be shared
Computer Room	2	19	37	
Patient Toilet	1	5	5	
Viewing/Reading	1	7	7	
Tech Work Area	1	7	7	
Supply Storage/Workroom	1	7	7	
Nuclear Medicine				
General Procedure Room w/ Control	2	30	59	
Computer Room	1	9	9	
Reading/Dictation	1	11	11	
Storage Room	1	7	7	
Patient Preparation Room	1	11	11	
Injection Room	1	7	7	
Patient Toilet	1	5	5	
Hot Lab	1	6	6	
Mammography				
Gowned Waiting	1	6	6	
Mammography Room	2	14	28	
Patient Toilet	1	5	5	
Viewing/Reading	1	6	6	
Dark Room	1	6	6	
Processing Area	1	6	6	
Tech Work Area	1	6	6	

New Zayed Military Hospital
Abu Dhabi, UAE

CATHRYN BANG + PARTNERS
Architecture Planning Interiors

DIAGNOSTIC & TREATMENT SERVICES

600 bed Trauma Center

DETAILED SOA

September 17, 2007

ROOM / SPACE	QTY	NSM	TOTAL	COMMENTS
Bone Densitometry				
Bone Densitometry Room	1	14	14	
Patient Toilet	1	5	5	
Viewing/Reading	1	6	6	
Tech Work Area	1	6	6	
Interventional Radiology				
Procedure Room	1	54	54	Angiography system
Control	1	9	9	
Computer Room	1	7	7	
Scrub Alcove	1	4	4	
Viewing / Reading	1	11	11	
Exam Room	2	10	20	
Patient Holding, Stretcher	2	6	11	
Post-Procedure Recovery	2	7	15	
Patient Toilet	1	5	5	
Administration Area				
Office - Chairman	1	17	17	
Workstation - Administrative Assistant	1	6	6	
Office - Radiology Administrator	1	11	11	
Workstation - Administrative Assistant	1	6	6	
Office - Radiology Manager	2	11	22	
Office - Radiation Safety Officer	1	11	11	
Office - Statistician	1	11	11	
Office - Physicist	1	11	11	
Office - Quality Assurance Coordinator	1	11	11	
Workstation - Technologist	4	6	22	
Workstation - Administrative Support	4	6	22	
Computer Room/Information Systems	1	11	11	
RAIS Clinical Support Area	1	11	11	
PACS Support Workroom	1	11	11	
Conference Room	1	22	22	
Radiology Library	1	22	22	
Computer	1	7	7	
Staff Facilities Area				
Staff Lounge	1	22	22	
Staff Lockers/Mail Boxes	2	11	22	
Staff Toilet	2	11	22	
NET SQUARE METER			1,834	
GROSS SQUARE METER Conv Factor	1.50		2,750	
RADIOLOGY TOTAL			2,750	
	PWC		2,700	

New Zayed Military Hospital
Abu Dhabi, UAE

CATHRYN BANG + PARTNERS
Architecture Planning Interiors

DIAGNOSTIC & TREATMENT SERVICES

600 bed Trauma Center

DETAILED SOA

September 17, 2007

ROOM / SPACE	QTY	NSM	TOTAL	COMMENTS
Physical Medicine & Rehab				
Reception/Control Area				
Reception/Control	1	11	11	
Scheduling	2	17	33	
Waiting	2	28	56	
Pediatrics Waiting	1	11	11	
Toilet	2	11	22	
Stretcher/Wheelchair Storage	1	7	7	
Dispatcher Area	1	7	7	
Patient Education/Library/Conference	1	22	22	
Outpatient Gown and Waiting Areas				
Dressing w/ locker	14	2	26	
Dressing w/ locker	2	4	7	
Gowned Waiting	2	11	22	
Patient Toilet	2	5	9	
Inpatient Holding				
Patient Holding (Stretcher)	6	6	33	
Physical Therapy				
Hydrotherapy Low Boy/Limb Tanks	4	11	45	Separate Male, Female and Peds Area
Aquacizer	1	17	17	
Hot Pack Work Area	1	22	22	
Exercise Area	1	372	372	
Traction Unit	4	11	45	
Biofeedback Room	4	11	45	
Neuroscience Exercise Area	1	28	28	
Treatment Cubicle	16	7	119	
Equipment Storage	1	56	56	
Soiled Holding	2	11	22	
Clean Utility/Freezer	2	11	22	
Ice Machine/Nourishment	2	6	11	
Patient Dressing/Lockers - Male	1	42	42	
Patient Toilet/Shower - Male	1	15	15	
Patient Dressing/Lockers-Female	1	42	42	
Patient Toilet/Shower - Female	1	15	15	

New Zayed Military Hospital
Abu Dhabi, UAE

CATHRYN BANG + PARTNERS
Architecture Planning Interiors

DIAGNOSTIC & TREATMENT SERVICES

600 bed Trauma Center

DETAILED SOA

September 17, 2007

ROOM / SPACE	QTY	NSM	TOTAL	COMMENTS
Occupational Therapy				
ADL:				
Bathroom	2	7	13	
Kitchen	2	11	22	
Hand Therapy:				
CPM	6	7	45	
Biofeedback Room	2	11	22	
Private Mat Area	4	11	45	
Hand Treatment Tables	1	50	50	
Equipment Storage	1	14	14	
Therapy Room	1	37	37	
Computer Room - Cognitive	1	11	11	
BTE Work Station	1	37	37	
Administrative and Support Areas				
Office - PT/OT Manager	2	11	22	
Office - PT/OT Assistant Manager	1	11	11	
Storage - Office Supplies	1	11	11	
Work Area - Clinical Specialists	1	28	28	
Therapist Charting	1	28	28	
Wheelchair Storage	1	11	11	
Linen Cart Alcove	4	3	11	
Equipment Storage	1	17	17	
Janitor Closet	2	4	7	
Shared Staff Facilities				
Staff Lounge	1	22	22	
Staff Lockers	2	11	22	
Staff Toilet	2	11	22	
NET SQUARE METER			1,696	
GROSS SQUARE METER Conv Factor	1.40		2,375	
PHYSICAL MEDICINE & REHAB TOTAL			2,375	
	PWC		2,400	

New Zayed Military Hospital
Abu Dhabi, UAE

CATHRYN BANG + PARTNERS
Architecture Planning Interiors

DIAGNOSTIC & TREATMENT SERVICES

DETAILED SOA

600 bed Trauma Center

September 17, 2007

ROOM / SPACE	QTY	NSM	TOTAL	COMMENTS
ECT				
Control/Reception Area				
Reception/Clerical	1	6	6	
Waiting	2	4	7	
Toilet	1	5	5	
Patient Area				
Patient Holding, Stretcher	2	6	11	
Post-Procedure Recovery	2	7	15	
Patient Toilet	1	5	5	
ECT Treatment Room	2	15	30	
Tech Work Area	1	6	6	
Equipment, Supplies, Linen Storage	1	6	6	
Staff Facilities				
Staff Lounge/Lockers	1	7	7	
Staff Toilet	1	5	5	
NET SQUARE METER			101	
GROSS SQUARE METER Conv Factor	1.35		137	
ECT TOTAL			137	
	PWC		120	

New Zayed Military Hospital
Abu Dhabi, UAE

CATHRYN BANG + PARTNERS
Architecture Planning Interiors

DIAGNOSTIC & TREATMENT SERVICES

600 bed Trauma Center

DETAILED SOA

September 17, 2007

ROOM / SPACE	QTY	NSM	TOTAL	COMMENTS
Respiratory Therapy				
Patient Procedure Area				
Waiting	1	6	6	
Procedure Room	1	15	15	
Patient Toilet	1	5	5	
Equipment Cleaning/Work Area				
Soiled Area:				
Soiled Equipment Holding	1	7	7	
Pass-through Area	1	6	6	
Dirty Area Sink	1	6	6	
Hand-Washing Sink	1	2	2	
Clean Area:				
Clean-Up Area	1	7	7	
Set-Up Area for Disposable Equipment	1	6	6	
Set-up Area for Re-Usable Equipment	1	6	6	
Pasteurmatic Area	1	6	6	
Clean Sink Area	1	6	6	
Hand-Washing Sink	1	2	2	
Components Storage	1	6	6	
Tools Storage	1	6	6	
Large Dryers Area	1	7	7	
Testing Area w/ Medical Gases:				
Maintenance & Repair Work	1	6	6	
Ventilator Diagnostic Area	1	6	6	
Storage Area:				
Assembled Equipment Storage	1	6	6	
Cylinder Storage	1	6	6	
Equipment Storage	1	6	6	
Secured Storage Area	1	6	6	
Administration Area				
Office - Director, Respiratory Therapy	1	11	11	
Office - Supervisor, Utilization Review	1	9	9	
Office - Senior Administrative Analyst	1	9	9	
Workstation - QA/Equipment Supervisor	1	6	6	
Workstation - Equipment Assistant	1	6	6	
Staff Facilities				
Staff Lounge/Lockers	1	9	9	
Staff Toilet	1	5	5	
NET SQUARE METER			184	
GROSS SQUARE METER Conv Factor	1.25		230	
RESPIRATORY THERAPY TOTAL			230	
	PWC		210	

New Zayed Military Hospital
Abu Dhabi, UAE

CATHRYN BANG + PARTNERS
Architecture Planning Interiors

DIAGNOSTIC & TREATMENT SERVICES

600 bed Trauma Center

DETAILED SOA

September 17, 2007

ROOM / SPACE	QTY	NSM	TOTAL	COMMENTS
Neurological Testing				
Control/Reception Area				
Reception/Clerical	1	7	7	May be shared with adj. dept.
Waiting	2	6	11	
Stretcher Holding	2	6	11	
Patient Toilet	1	5	5	
Evoked Potential Lab				
Patient Testing Room	1	10	10	
Shared Patient Testing/Day Room	1	10	10	
Tech Work Area	1	4	4	
Physician Work Area	1	6	6	
Equipment, Supplies, Linen Storage	1	6	6	
EEG Lab				
Clerical Work Area	1	6	6	
Patient Testing Room	1	10	10	
Lab Cleaning Area	1	6	6	
Tech Work Area	1	4	4	
Physician Work	1	6	6	
Reading	1	6	6	
Utility Room	1	6	6	
Equipment and Supplies Storage	1	6	6	
EMG Lab				
Patient Testing Room	1	10	10	
Utility Room	1	6	6	
Office - Medical Director	1	11	11	
Physician Work Area	1	6	6	
Administration Area				
Office - Department Head	1	11	11	
Work Area - Administrative Assistant	1	6	6	
Shared Staff Facilities				
Staff Lounge/Lockers	1	9	9	
Staff Toilet	1	5	5	
NET SQUARE METER			173	
GROSS SQUARE METER Conv Factor	1.40		242	
NEUROLOGICAL TESTING TOTAL			242	
	PWC		220	

New Zayed Military Hospital
Abu Dhabi, UAE

CATHRYN BANG + PARTNERS
Architecture Planning Interiors

DIAGNOSTIC & TREATMENT SERVICES

600 bed Trauma Center

DETAILED SOA

September 17, 2007

ROOM / SPACE	QTY	NSM	TOTAL	COMMENTS
Non Invasive Cardiology				
Waiting/Reception Area				
Reception/Clerical	2	6	11	
Waiting Area	2	11	22	
Inpatient Holding Area	1	7	7	
Toilet	2	5	9	
Procedure Area				
Gowning Area	2	11	22	
Patient Toilet	1	5	5	
Procedure Room, ECG/ECHO	3	17	50	
Treadmill/CPX Room	1	17	17	
Emergency Cart Park	1	2	2	
Utility Cart Park	2	2	4	
Patient Toilet	1	5	5	
Technician Workroom	1	22	22	
Reading Room	1	17	17	
Physician Office	2	11	22	
Support Area				
Computer Equipment Room	1	22	22	
Clean Utility	1	11	11	
Soiled Utility	1	11	11	
Supply/Storage	1	17	17	
Jantor Closet	1	4	4	
Staff Facilities Area				
Staff Lounge/Lockers	1	11	11	
Staff Toilet	1	5	5	
NET SQUARE METER			296	
GROSS SQUARE METER Conv Factor	1.40		415	
NON INVASIVE CARDIOLOGY TOTAL			415	
	PWC		380	

New Zayed Military Hospital
Abu Dhabi, UAE

CATHRYN BANG + PARTNERS
Architecture Planning Interiors

DIAGNOSTIC & TREATMENT SERVICES

DETAILED SOA

600 bed Trauma Center

September 17, 2007

ROOM / SPACE	QTY	NSM	TOTAL	COMMENTS
Invasive Cardiology				
Waiting/Reception Area				Share w/ Non-Invasive Cardiology
Reception/Clerical				
Waiting Area				
Toilet				
Cardiac Cath & Electrophysiology				Pediatrics Cath Lab need to be designated.
Patient Holding, Stretcher	2	6	11	
Patient Holding, Stretcher	4	7	30	
Patient Toilet	1	5	5	
Procedure Room	2	65	130	Cath
Control	1	9	9	
Scrub Alcove	1	2	2	
Viewing / Dictation	1	11	11	
Computer Room	1	7	7	
Sterile Supplies / Utility	1	11	11	
Supply Storage	1	11	11	
Soiled Utility	1	11	11	
Equipment Storage	1	11	11	
Peds Echocardiography Storage	1	7	7	
Housekeeping Closet	1	4	4	
Administration Area				
Office - Cardiologist				See Cardiology Admin Program
Office - Nurse Manager	1	11	11	
Office - Nurse Practitioner	1	7	7	
Staff Facilities				
On-Call Room	1	7	7	
Toilet/Shower	1	7	7	
Staff Lounge	1	15	15	
Staff Lockers	2	7	15	
Staff Toilet/Shower	2	7	15	
NET SQUARE METER			338	
GROSS SQUARE METER Conv Factor	1.50		507	
INVASIVE CARDIOLOGY TOTAL			507	
	PWC		490	

New Zayed Military Hospital
Abu Dhabi, UAE

CATHRYN BANG + PARTNERS
Architecture Planning Interiors

DIAGNOSTIC & TREATMENT SERVICES

600 bed Trauma Center

DETAILED SOA

September 17, 2007

ROOM / SPACE	QTY	NSM	TOTAL	COMMENTS
Laboratory and Blood Bank				
Surgical Pathology				
Specimen Receiving	1	6	6	
Frozen Section/Staining:				
Cutting Area/Grossing/Photography	1	7	7	
Band Saw/Saws	1	7	7	
Storage of Specimens w/ Containers	1	7	7	
Specimens w/ Containers, Wet Storage	1	7	7	
Removed Prosthetics Storage	1	7	7	
Chemical Storage and Waste Hold	1	7	7	
Sink/Eyewash Station/ Dirty Coats	1	6	6	
Supplies Storage	1	7	7	
Accessioning Area/Labeling/Copy	1	6	6	
Receptionist Area for Clinicians	1	6	6	
Office - Chief, Surgical Pathology	1	11	11	
Chief Residents Workroom	1	11	11	
Residents Workroom	1	11	11	
Workstation - Fellows	2	6	11	
Attendings' Signout Room - Hotelling	1	11	11	
Resident Room/Sign Out, Liver cases	1	7	7	
Resident Room/Sign Out, Frozen Section	1	7	7	
Resident Room/Signout, General	1	7	7	
Blood Bank				
Blood Donor Recruitment	1	7	7	
Blood Depot, Shipping/Receiving	1	7	7	
Blood Bank Lab:				
Specimen Receiving & Order Entry	1	6	6	
Blood & Blood Product Issue	1	6	6	
Patient & Blood Testing	1	7	7	
Blood Labelling & Blood Inventory Control	1	7	7	
Component Preparation	1	11	11	
Billing/Mail/Copy	1	6	6	
Blood Freezer Room	1	7	7	
Cold Room	2	7	15	
Lab Service Workroom	1	22	22	
Record Storage	1	6	6	
Office - Medical Director	1	11	11	
Office - Manager	1	11	11	
Office - Supervisor	1	11	11	
Workstation - Administrative Assistant	1	6	6	
Files	1	4	4	

New Zayed Military Hospital
Abu Dhabi, UAE

CATHRYN BANG + PARTNERS
Architecture Planning Interiors

DIAGNOSTIC & TREATMENT SERVICES

600 bed Trauma Center

DETAILED SOA

September 17, 2007

ROOM / SPACE	QTY	NSM	TOTAL	COMMENTS
Hemapheresis				
Clean Lab	1	15	15	
Hematology Lab	1	15	15	
Equipment Storage	1	7	7	
Supply Storage	1	7	7	
Office - Technical Director	1	11	11	
Office - Technical Head	1	11	11	
Stat Lab/Toxicology				
Lab	1	11	11	
Method Development	1	7	7	
Fractionation Freeze	1	7	7	
Reagent Room & Type I Water	1	7	7	
Reagent Storage	1	7	7	
Room Temperature Storage	1	11	11	
Lab QC	1	7	7	
Office - Supervisor	1	11	11	
Office - Manager	1	11	11	
Assist w/ Bone Marrow Staff Workroom	1	11	160	
Resident Room, Readout	1	7	7	
Support Area				
Instrument Repair	1	9	9	
Storage	1	6	6	
Glasswash	1	7	7	
Supplies Storage/Workroom	1	7	7	
Tank Storage Room	1	7	7	
Blowout Storage Room	1	7	7	
Library/Reference/Conference	1	33	33	
Staff Facilities				
Staff Lounge/Lockers	1	17	17	
Staff Toilet	2	5	9	
NET SQUARE METER			615	
GROSS SQUARE METER Conv Factor	1.30		799	
LABORATORY & BLOOD BANK TOTAL			799	
	PWC		750	

New Zayed Military Hospital
Abu Dhabi, UAE

CATHRYN BANG + PARTNERS
Architecture Planning Interiors

DIAGNOSTIC & TREATMENT SERVICES

DETAILED SOA

600 bed Trauma Center

September 17, 2007

ROOM / SPACE	QTY	NSM	TOTAL	COMMENTS
Morgue				
Integrated Decent Affairs				
Body Holding/Cold Room	1	33	33	
Family Viewing Room	1	15	15	w/ Pleasant Environment
NET SQUARE METER			48	
GROSS SQUARE METER Conv Factor	1.30		63	
MORGUE TOTAL			63	
		PWC	65	

New Zayed Military Hospital
Abu Dhabi, UAE

CATHRYN BANG + PARTNERS
Architecture Planning Interiors

DIAGNOSTIC & TREATMENT SERVICES

DETAILED SOA

600 bed Trauma Center

September 17, 2007

ROOM / SPACE	QTY	NSM	TOTAL	COMMENTS
Social Work				
Social Work Area				
Waiting Area	1	6	6	
Interview/Consultation Room	1	11	11	
Office - Manager	1	11	11	
Office - Clinical Social Worker	4	11	45	
Workstation - Administrative Assistant	2	6	11	
Copy/Supply Storage/Workroom	1	7	7	
Conference Room	1	22	22	
Staff Toilet	1	5	5	
NET SQUARE METER			118	
GROSS SQUARE METER Conv Factor	1.30		153	
SOCIAL WORK TOTAL			153	
		PWC	140	

New Zayed Military Hospital
Abu Dhabi, UAE

CATHRYN BANG + PARTNERS
Architecture Planning Interiors

OUTPATIENT SERVICES

DETAILED SOA

600 bed Trauma Center

September 17, 2007

ROOM / SPACE	QTY		COMMENTS
Ophthalmology Clinic			
Reception/Waiting			
Reception	2	6	11
Waiting	2	17	33
Toilet	2	5	9
Consultation	1	11	11
Exam Area			
Exam - Long Lane	2	17	33
Exam - Short Lane	2	14	28
Work Room	1	9	9
Patient Toilet	1	5	5
Laser Center			
Laser Room - Ophthalmology	5	14	70
Laser Room - Ophthalmology, Large	3	17	50
Work Room	1	14	14
Patient Toilet	1	5	5
Retina Lab			
Photography Room	2	14	28
Slide Processing	1	14	14
Darkroom	1	9	9
Neuro Ophthalmology Area			
Ultrasound/Biometry Testing Room	1	17	17
Electrophysiology	1	22	22
Support Areas			
Clean Utility	1	7	7
Soiled Utility	1	7	7
Storage	1	17	17
Office - Supervisor	1	11	11
Office - Technician/Nursing	1	11	11
Staff Toilet	1	5	5
Janitor Closet	1	4	4
NET SQUARE METER			431
GROSS SQUARE METER Conv Factor	1.40		604
OPHTHALMOLOGY CLINIC TOTAL			604
	PWC		580

New Zayed Military Hospital
Abu Dhabi, UAE

CATHRYN BANG + PARTNERS
Architecture Planning Interiors

OUTPATIENT SERVICES

DETAILED SOA

600 bed Trauma Center

September 17, 2007

ROOM / SPACE	QTY		COMMENTS
Dialysis			
Reception	1	7	7
Waiting	2	7	15
Toilet	2	5	9
Consultation	1	11	11
Treatment Station	7	7	52 Three wall bays
Patient Toilet	1	5	5
Isolation Room	1	9	9
Isolation Anteroom	1	4	4
Patient Toilet	1	5	5
Private Treatment Room	2	9	19
Patient Toilet	1	5	5
Nurses Station	1	7	7
Pneumatic Tube/Distribution Area	1	2	2
Emergency Cart Park	1	2	2
Medication Area	1	4	4
Clerical Work	1	4	4
Machine Repair/Set-Up Room	1	9	9
Peritoneal Workroom	1	14	14
Water TX Room	1	7	7
Clean Utility	1	7	7
Linen Storage	1	3	3
Soiled Utility	1	7	7
Housekeeping Closet	1	4	4
Office - Clinical Nurse Manager	1	11	11
Office/Consultation Room - Physician	2	11	22
Staff Lounge/Lockers/Conference	1	17	17
Staff Toilet	1	5	5
NET SQUARE METER			266
GROSS SQUARE METER Conv Factor	1.40		372
DIALYSIS TOTAL			372
	PWC		350

New Zayed Military Hospital
Abu Dhabi, UAE

CATHRYN BANG + PARTNERS
Architecture Planning Interiors

OUTPATIENT SERVICES

DETAILED SOA

600 bed Trauma Center

September 17, 2007

ROOM / SPACE	QTY		COMMENTS
Nephrology Clinic			
Reception/Registration	1	7	7
Waiting	2	7	15
Public Toilet	2	5	9
Exam Room	2	11	22
Consultation Room	1	11	11
Patient Toilet	1	5	5
Nurses Station	1	13	13
Workroom	1	6	6
Clean Supply/Linen	1	7	7
Soiled Utility	1	7	7
Equipment Storage	1	7	7
Janitor Closet	1	4	4
Office - Physician	2	11	22
Office - Administrative Assistant	1	11	11
Work/Copy/Files	1	7	7
Staff Lounge/Lockers	1	11	11
Staff Toilet	1	5	5
NET SQUARE METER			171
GROSS SQUARE METER Conv Factor	1.40		239
NEPHROLOGY CLINIC TOTAL			239
	PWC		250

New Zayed Military Hospital
Abu Dhabi, UAE

CATHRYN BANG + PARTNERS
Architecture Planning Interiors

OUTPATIENT SERVICES

DETAILED SOA

600 bed Trauma Center

September 17, 2007

ROOM / SPACE	QTY		COMMENTS
OP Psychiatric Clinic			
Receptionist	1	5	5
Registration Counter	2	7	15
Waiting	2	11	22
Toilet	2	5	9
Interview room	1	11	11
Exam Room	1	11	11
Group Room, Large	1	37	37
Group Room, Medium	1	22	22
Group Room, Small	1	17	17
Record Storage	1	11	11
Storage/Copier Room	1	7	7
Janitor Closet	1	3	3
Office - Director	1	14	14
Office - Social Worker	1	11	11
Office - Psychologist/Psychiatrist	2	11	22
Secretary	3	6	17
Staff Lounge/Locker	1	11	11
Staff Toilet	2	5	9
NET SQUARE METER			256
GROSS SQUARE METER Conv Factor	1.40		358
OP PSYCHIATRY CLINIC			358
	PWC		340

New Zayed Military Hospital
Abu Dhabi, UAE

CATHRYN BANG + PARTNERS
Architecture Planning Interiors

OUTPATIENT SERVICES

DETAILED SOA

600 bed Trauma Center

September 17, 2007

ROOM / SPACE	QTY		COMMENTS
ENT Clinic			
Reception/Registration	2	7	15
Waiting	2	22	45
Toilet	2	5	9
Consultation Room	1	11	11
Examination Room	9	11	100
Examination Room, Large	2	17	33
Procedure Room	2	22	45
Patient Toilet	2	5	9
Consultation Room	2	11	22
Audiology & Speech Pathology:			
Treatment Room	2	11	22
Audiology Booth	2	11	22
Audiology Equipment Storage	1	7	7
Nursing Station	1	22	22
Workroom	1	11	11
Charting	1	11	11
Clean Supply/Linen	1	11	11
Soiled Utility	1	11	11
Equipment Storage	1	17	17
Janitor Closet	1	3	3
Office - Clinical Nurse Manager	1	11	11
Office - Physician	12	11	134
Workstation - Administrative Assistant	4	6	22
Conference Room	1	22	22
Staff Lounge/Lockers/Conference	1	17	17
Staff Toilet	2	5	9
NET SQUARE METER			644
GROSS SQUARE METER Conv Factor	1.40		902
ENT CLINIC TOTAL			902
	PWC		900

New Zayed Military Hospital

Abu Dhabi, UAE

CATHRYN BANG + PARTNERS
Architecture Planning Interiors

OUTPATIENT SERVICES

DETAILED SOA

600 bed Trauma Center

September 17, 2007

ROOM / SPACE	QTY		COMMENTS
ZMH Multi-Specialty Clinic			
Waiting Area			
Reception/Registration	2	17	33
Interview Room	2	9	19
Waiting	2	37	74
Pediatric Play Area	1	7	7
Toilet	2	11	22
Exam Area			
			16 Exam Room Module
Health Evaluation Service Waiting	2	17	33
Weight & Temp./Testing Room	2	11	22
Consult Room	2	11	22
Exam Room, Large	4	15	59
Exam Room	12	11	134
Patient Toilet	4	5	19
MOA Work	4	7	26
Diagnostic Testing Room	2	22	45
Procedure Room	2	30	59
Support Area			
Nurses Station	1	22	22
Charting Area	1	11	11
Record Room	1	22	22
Medication Area	1	7	7
Clean Supply and Linen	1	11	11
Soiled Holding	1	11	11
Equipment Storage	1	17	17
Janitor Closet	1	3	3
Administrative Area			
Office - Lead Nurse, Module Manager	1	11	11
Office - Physician	4	11	45
Workstation - Administrative Assistant	2	6	11
Report Room	1	22	22
Diagnostic Area			
Small Lab	1	9	9
Phlebotomy Area	1	17	17
Immunization Room	1	17	17
Patient Toilet	1	5	5
Consultation Area:			
Office/Consult Room - Dietary	1	11	11
Office/Consult Room - Diabetes	1	11	11
Office/Consult Room - Social Serv	1	11	11

New Zayed Military Hospital
Abu Dhabi, UAE

CATHRYN BANG + PARTNERS
Architecture Planning Interiors

OUTPATIENT SERVICES

DETAILED SOA

600 bed Trauma Center

September 17, 2007

ROOM / SPACE	QTY		COMMENTS
Staff Facilities			
Conference Room	1	22	22
Staff Lounge/Lockers	1	22	22
Staff Toilet	2	11	22
NET SQUARE METER			918
GROSS SQUARE METER Conv Factor	1.40		1,286
			x 6 = 7,713
			Modules
ZMH MULTI-SPECIALTY CLINIC TOTAL			7,713
	PWC		7,800

New Zayed Military Hospital
Abu Dhabi, UAE

CATHRYN BANG + PARTNERS
Architecture Planning Interiors

OUTPATIENT SERVICES

DETAILED SOA

600 bed Trauma Center

September 17, 2007

ROOM / SPACE	QTY		COMMENTS
VIP Clinic			
Reception/Registration	1	11	11
Waiting	2	22	45
Public Toilet	1	7	7
Exam Room	4	22	89
Consultation Room	1	22	22
Patient Toilet	1	7	7
Nurses Station	1	17	17
Workroom	1	11	11
Clean Supply/Linen	1	7	7
Soiled Utility	1	7	7
Equipment Storage	1	7	7
Janitor Closet	1	4	4
Office - Hotelling Office	1	11	11
Office - Physician	2	11	22
Office - Administrative Assistant	1	11	11
Work/Copy/Files	1	7	7
Staff Lounge/Lockers	1	14	14
Staff Toilet	1	5	5
NET SQUARE METER			305
GROSS SQUARE METER Conv Factor	1.40		427
VIP CLINIC TOTAL			427
	PWC		440